



2013

KTA SPINDLE TOOLINGS

- ❑ TAPPING CHUCKS
- ❑ TAP ADAPTORS
- ❑ TAPPING ATTACHMENTS
- ❑ RIGID TAPPING CHUCK





INDEX

Sr. No.	CONTENTS	PAGE
1	WFLK (Quick Change Tapping Chuck)	1-4
2	Quick Change Tap Adaptor KWES : SIZE 1,2,3,4	5-17
3	Quick Change Tap Adaptor KWE : SIZE 0,1,2,3,4	18-24
4	Quick Change Tap Adaptor KWRE [Reduction Socket]	24-26
5	Quick Change Tap Adaptor With Axial Compensation (ERT)	27-32
6	Quick Change Drilling & Tapping Chuck (QCDTC)	33-37
7	'CCSFL' Tapping Attachment	38-40
8	Quick Change Tapping Attachment	41-43
9	Quick Change Tapping ChucksType KWFSL 60	44-47
9	Rigid Tapping Chuck	48

The information in this catalog is believed to be correct . KTA Spindle Toolings , however, assumes no responsibility for any errors , inaccuracies or omissions that may appear in this catalog. Information in this catalog is subject to change without notice and should not be taken as a commitment by KTA Spindle Toolings or it's subsidiaries .

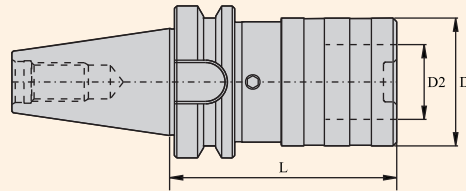
QUICK CHANGE TAPPING CHUCK (KWFLK)



TYPE KWFLK SIZE :1, 2, 3 & 4

Quick Change Tapping Chuck Type KWFLK/BT/MAS 403

Taper Angle Class AT3

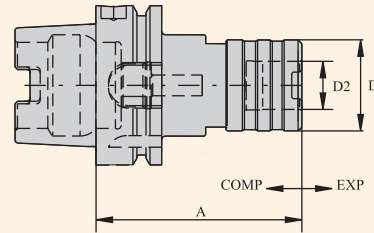
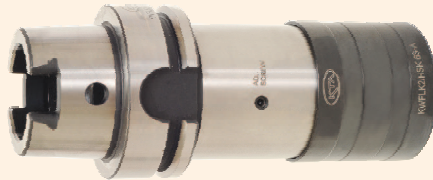


Ordering Example : KWFLK2/BT40 : 2Nos.

Item Name	Item Code	For Taps Size	Suitable Adaptors	Length Comp.		D dia.	D2 dia.	L	Price INR
				Compr.	Expan.				
BT 30 KWFLK1 64.0	K10101169278127	M3 - M12	KWES1B	7.50	7.50	36	19	64.0	6240
BT 40 KWFLK1 67.5	K10102169124127	M3 - M12	KWES1B	7.50	7.50	36	19	67.5	6925
BT 40 KWFLK2 94.5	K10102170144127	M8 - M20	KWES2B	12.50	10.50	53	31	94.5	8315
BT 40 KWFLK3 164.5	K10102171176127	M14 - M33	KWES3B	20.00	20.00	78	48	164.5	14555
BT 40 KWFLK4 180		M22 - M48	KWES4B	22.50	22.50	96	60	180	
BT 50 KWFLK1 77.0	K10103169279127	M3 - M12	KWES1B	7.50	7.50	36	19	77.0	9145
BT 50 KWFLK2 102.5	K10103170280127	M8 - M20	KWES2B	12.50	12.50	53	31	102.5	10390
BT 50 KWFLK3 142.5	K10103171171127	M14 - M33	KWES3B	20.00	20.00	78	48	142.5	17545
BT 50 KWFLK4 164.5	K10103172176127	M22 - M48	KWES4B	22.50	22.50	96	60	164.5	26460

Ordering Example :-BT30 KWFLK1 64.0 = 2 Nos.

TAPPING CHUCK ACTING ON COMPRESSION & EXPANSION (KWFLK)



Item Name	Item Code	Capacity	Suitable Adaptors	D2	D	A	Length Comp.(MM)		Price INR
							Expan.	Compr.	
HSK - A50 KWFLK1	K10166169371127	M3 - M12	KWES1B	19	36	76	7.5	7.5	10800
HSK - A50 KWFLK2	K10166170163127	M5 - M20	KWES2B	31	53	123	12.5	12.5	12000
HSK - A63 KWFLK1	K10167169372127	M3 - M12	KWES1B	19	36	81	7.5	7.5	10885
HSK - A63 KWFLK2	K10167170373127	M5 - M20	KWES2B	31	53	119	12.5	12.5	12360
HSK - A63 KWFLK3	K10167171374127	M14 - M33	KWES3B	48	78	176	20.0	20.0	15310
HSK - A100 KWFLK1	K10168169375127	M3 - M12	KWES1B	19	36	90	7.5	7.5	14170
HSK - A100 KWFLK2	K10168170376127	M5 - M20	KWES2B	31	53	138	12.5	12.5	16100
HSK - A100 KWFLK3	K10168171179127	M14 - M33	KWES3B	48	78	190	20.0	20.0	18710
HSK - A100 KWFLK4	K10168172378127	M22 - M48	KWES4B	60	96	225	22.5	22.5	32400

Ordering Example :-HSK A63 WFLK2 = 2 Nos.

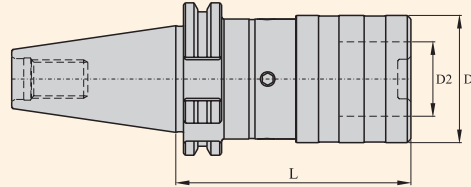
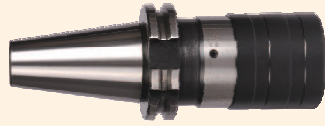


QUICK CHANGE TAPPING CHUCK (KWFLK)

TYPE KWFLK SIZE :1, 2, 3 & 4

Quick Change Tapping Chuck Type KWFLK/SK/DIN 69871

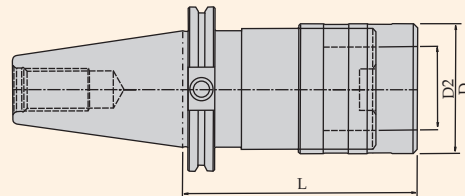
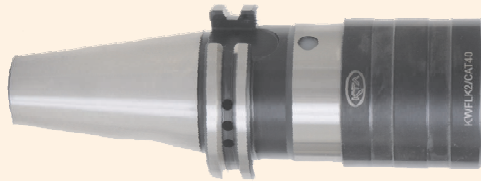
Taper Angle Class AT3



Ordering Example : KWFLK3/SK : 2Nos.

Item Name	Item Code	For Taps Size	Suitable Adaptors	Length Comp.		D dia.	D2 dia.	L	Price INR
				Compr.	Expan.				
SK40KWFLK1	K10104169287127	M3 - M12	KWES1B	7.50	7.50	36	19	60.0	6925
SK40KWFLK2	K10104170288127	M8 - M20	KWES2B	12.50	12.50	53	31	98.0	8315
SK40KWFLK3	K10104171289128	M14 - M33	KWES3B	20.00	20.00	78	48	151.0	14555
SK40KWFLK4	K10104172176127	M22 - M48	KWES4B	22.5	22.5	96	60	165.0	23940
SK50KWFLK1	K10105169117127	M3 - M12	KWES1B	7.5	7.5	36	19	60.0	9145
SK50KWFLK2	K10105170290127	M8 - M20	KWES2B	12.5	12.5	53	31	84.0	10390
SK50KWFLK3	K10105171168127	M14 - M33	KWES3B	20.00	20.00	78	48	139.0	17545
SK50KWFLK4	K10105172174127	M22 - M48	KWES4B	22.5	22.5	96	60	152.0	26460

WFLK CHUCKS TAPPING CHUCKS WFLK SIZE : 1,2,3,4



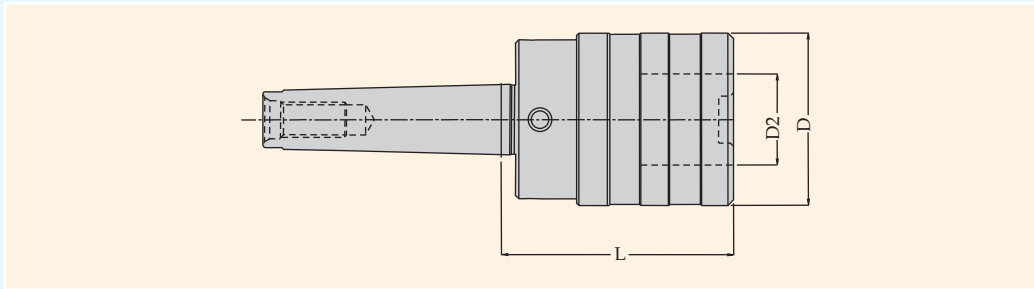
Item Name	Item Code	For Taps Size	Suitable Adaptor	Length Comp.		D dia.	D2 dia.	Cat 40 L	Cat 50 L	Price INR
				Compr.	Expan.					
CAT40/KWFLK1	K10203169301127	M3-M12	KWES1B	7.50	7.50	36	19	76	---	6925
CAT40/KWFLK2	K10203170301127	M8-M20	KWES2B	12.50	12.50	53	31	100	---	8395
CAT40/KWFLK3	K10203171301127	M14-M33	KWES3B	20.00	20.00	78	48	150	---	14555
CAT50/KWFLK1	K10204169301127	M3-M12	KWES1B	7.50	7.50	36	19	---	76	9245
CAT50/KWFLK2	K10204170301127	M8-M20	KWES2B	12.50	12.50	53	31	---	100	10390
CAT50/KWFLK3	K10204171301127	M14-M33	KWES3B	20.00	20.00	78	48	---	140	17545
CAT50/KWFLK4	K10204172301127	M22-M48	KWES4B	22.50	22.50	96	60	---	152	26460

Ordering Example :-CAT40/KWFLK1 = 2 Nos.

QUICK CHANGE TAPPING CHUCK (PULL TYPE) DIN 228 A

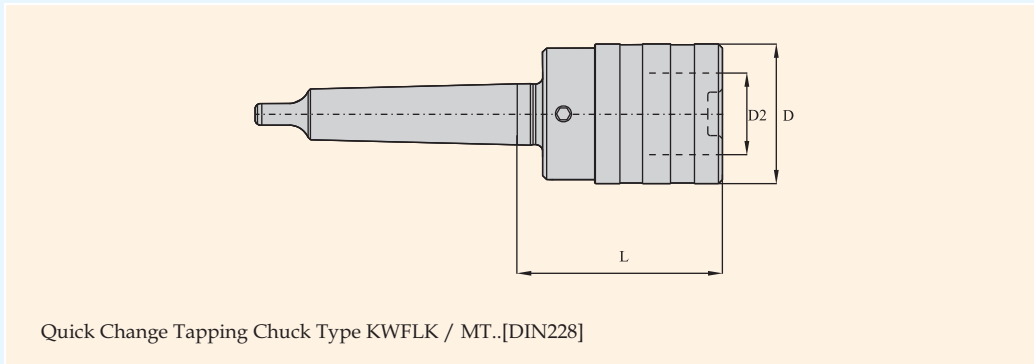


TYPE KWFLK SIZE : 1, 2, 3 & 4



Item Name	Item Code	For Taps Size	Suitable Adaptors	Length Comp.		D dia.	D2 dia.	L	Price INR
				Compr.	Expan.				
MT2A KWFLK1	K11196233193	M3 - M12	KWES1B	7.50	7.50	36	19	52	5545
MT3A KWFLK1	K11197233193	M3 - M12	KWES1B	7.50	7.50	36	19	52	5545
MT3A KWFLK2	K11197234193	M3 - M12	KWES1B	7.50	7.50	36	19	52	6925
MT4A KWFLK2	K11212234193	M3 - M12	KWES1B	7.50	7.50	36	19	52	6925
MT4A KWFLK3	K11212235193	M8 - M20	KWES2B	12.50	12.50	53	51	76	13165
MT5A KWFLK3	K11214235193	M8 - M20	KWES2B	12.50	12.50	53	51	78	13165
MT5A KWFLK4	K11214236193	M8 - M20	KWES2B	12.50	12.50	53	51	78	23940

QUICK CHANGE TAPPING CHUCK TANG TYPE (DIN 228 B)

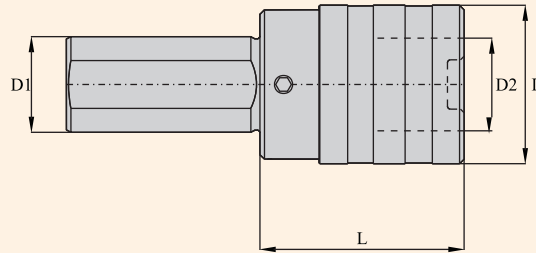


Item Name	Item Code	For Taps Size	Suitable Adaptors	Length Comp.		D dia.	D2 dia.	L	Price INR
				Compr.	Expan.				
MT2 B KWFLK1	K11201233193	M3 - M12	KWES1B	7.50	7.50	36	19	47	5545
MT3 B KWFLK1	K11202233193	M3 - M12	KWES1B	7.50	7.50	36	19	47	5545
MT3 B KWFLK2	K11202234193	M8 - M20	KWES2B	12.50	12.50	53	31	71	6925
MT4 B KWFLK2	K11213234193	M8 - M20	KWES2B	12.50	12.50	53	31	72	6925
MT4 B KWFLK3	K11213235193	M14 - M33	KWES3B	20.00	20.00	78	48	105	13165
MT5 B KWFLK3	K11215235193	M14 - M33	KWES3B	20.00	20.00	78	48	105.5	13165
MT5 B KWFLK4	K11215236193	M22 - M48	KWES4B	22.5	22.5	96	60	117	23940



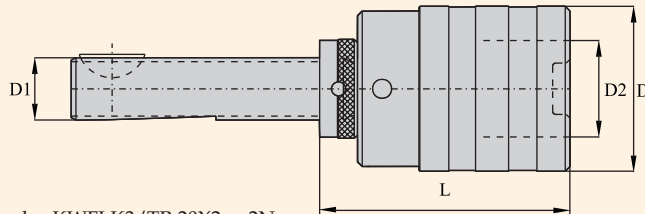
QUICK CHANGE TAPPING CHUCK

TYPE KWFLK SIZE : 1, 2, 3 & 4



Item Name	Item Code	For Taps Size	Suitable Adaptors	Length Comp.		D dia.	D1 dia.	D2 dia.	L	Price INR
				Compr.	Expan.					
DIA 1" KWFLK1	K10219169301127	M3 - M12	KWES1B	7.50	7.50	36	1"	19	40	5545
DIA 3/4" KWFLK1	K10221169301127	M3 - M12	KWES1B	7.50	7.50	36	3/4"	19	40	5545
DIA 20 KWFLK1	K11176233193	M3 - M12	KWES1B	7.50	7.50	36	20	19	40	5545
DIA 25 KWFLK1	K11177233193	M3 - M12	KWES1B	7.50	7.50	36	25	19	40	5545
DIA 32 KWFLK1	K11178233193	M3 - M12	KWES1B	7.50	7.50	36	32	19	40	5545
DIA 1" KWFLK2	K10219170301127	M8 - M20	KWES2B	12.50	12.50	53	1"	31	63	6925
DIA 25 KWFLK2	K11177234193	M8 - M20	KWES2B	12.50	12.50	53	25	31	63	6925
DIA 32 KWFLK2	K11178234193	M8 - M20	KWES2B	12.50	12.50	53	32	31	63	6925
DIA 40 KWFLK2	K11179234193	M8 - M20	KWES2B	12.50	12.50	53	40	31	63	6925
DIA 32 KWFLK3	K11178235193	M14 - M33	KWES3B	20.00	20.00	78	32	48	125	13165
DIA 40 KWFLK3	K11179235193	M14 - M33	KWES3B	20.00	20.00	78	40	48	125	13165
DIA 1-1/2" KWFLK3	K11211235193	M14 - M33	KWES3B	20.00	20.00	78	1-1/2"	48	125	22680
DIA 40 KWFLK4	K11179236193	M22 - M48	KWES4B	22.50	22.50	96	40	60	126	22680
DIA 50 KWFLK4	K11180236193	M22 - M48	KWES4B	22.50	22.50	96	50	60	126	23400

Quick Change Tapping Chuck Type KWFLK / TR..(DIN 6327)



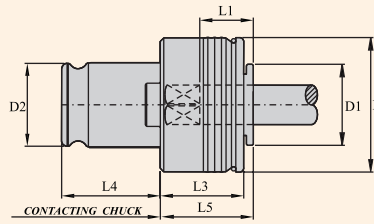
Ordering Example : KWFLK3/TR 20X2 = 2Nos

Item Name	Item Code	For Taps Size	Suitable Adaptors	Length Comp.		D dia.	D2 dia.	L	Price INR
				Compr.	Expan.				
TR 16 KWFLK1	K11181233193	M3 - M12	KWES1B	7.50	7.50	36	19	52	7500
TR 20 KWFLK1	K11182233193	M3 - M12	KWES1B	7.50	7.50	36	19	52	7500
TR 28 KWFLK1	K11183233193	M3 - M12	KWES1B	7.50	7.50	36	19	52	7500
TR 28 KWFLK2	K11183234193	M8 - M20	KWES2B	12.50	12.50	53	51	76	9145
TR 36 KWFLK2	K11184234193	M8 - M20	KWES2B	12.50	12.50	53	51	78	9985
TR 28 KWFLK3	K11183235193	M14 - M33	KWES3B	20.00	20.00	78	48	109	15815
TR 36 KWFLK3	K11184235193	M14 - M33	KWES3B	20.00	20.00	78	48	111	16630
TR 48 KWFLK3	K11186235193	M14 - M33	KWES3B	20.00	20.00	78	48	115	18300
TR 48KWFLK4	K11186236193	M22 - M48	KWES4B	22.50	22.50	96	60	117	29400

QUICK CHANGE TAPPING CHUCK



KWES 0B



Item Name	For Taps		Suitable for Chuck Size	D dia.	D1 dia.	D2 dia.	l1	l3	l4	l5	approx. Weight kgs.
	Thread dia.	Shank dia.									
KWES 0B	M1 - M10	2.5 - 7.2	0	23	13	13	15	20	19.5	21	0.060

Item Name	Item Code	Price INR
KWES 0B DIA 2.50 SQ 2.10 M1	K11132141135	1330
KWES 0B DIA 2.50 SQ 2.10 M1.8	K11132141136	1330
KWES 0B DIA 2.80 SQ 2.10 M2	K11132142194	1330
KWES 0B DIA 2.80 SQ 2.10 M2.5	K11132142103	1330
KWES 0B DIA 2.80 SQ 2.10 M3	K11132142104	1330
KWES 0B DIA 2.80 SQ 2.10 M4	K11132142105	1330
KWES 0B DIA 2.80 SQ 2.24 M2.2	K11132223102	1330
KWES 0B DIA 2.80 SQ 2.24 M2.5	K11132223103	1330
KWES 0B DIA 3.15 SQ 2.50 M3	K11132118104	1330
KWES 0B DIA 3.15 SQ 2.50 M4	K11132118105	1330
KWES 0B DIA 3.50 SQ 2.70 M3	K11132143104	1330
KWES 0B DIA 3.50 SQ 2.70 M5	K11132119196	1330
KWES 0B DIA 3.55 SQ 2.80 M3.5	K11132119107	1330
KWES 0B DIA 3.55 SQ 2.80 M4.5	K11132119155	1330
KWES 0B DIA 4.00 SQ 3.00 M3	K11132144106	1330
KWES 0B DIA 4.00 SQ 3.00 M3.5	K11132144105	1330
KWES 0B DIA 4.00 SQ 3.00 M4	K11132120197	1330
KWES 0B DIA 4.00 SQ 3.15 M4	K11132120108	1330
KWES 0B DIA 4.00 SQ 3.15 M5	K11132120158	1330
KWES 0B DIA 4.00 SQ 3.20 M3	K11132145159	1330
KWES 0B DIA 4.50 SQ 3.40 M4	K11132145109	1330
KWES 0B DIA 4.50 SQ 3.40 M6	K11132121159	1330
KWES 0B DIA 4.50 SQ 3.55 M6	K11132121109	1330
KWES 0B DIA 5.00 SQ 4.00 M4	K11132122105	1330
KWES 0B DIA 5.00 SQ 4.00 M4.5	K11132122107	1330
KWES 0B DIA 5.00 SQ 4.00 M5	K11132122108	1330
KWES 0B DIA 5.50 SQ 4.50 M4.5	K11132164107	1330
KWES 0B DIA 5.50 SQ 4.50 M5	K11132164108	1330
KWES 0B DIA 5.50 SQ 4.50 M5.5	K11132164141	1330
KWES 0B DIA 5.60 SQ 4.50 M7	K11132123110	1330
KWES 0B DIA 6.00 SQ 4.50 M6	K11132165109	1330
KWES 0B DIA 6.00 SQ 4.90 M5	K11132146108	1330
KWES 0B DIA 6.00 SQ 4.90 M6	K11132146109	1330
KWES 0B DIA 6.00 SQ 4.90 M8	K11132146111	1330

Ordering Example :- KWES0B DIA 2.50 SQ 2.10 M1 = 2 Nos.



QUICK CHANGE TAPPING CHUCK

KWES 0B

Item Name	Item Code	Price INR
KWES0B DIA 6.20 SQ 5.00 M7	K11132167110	1330
KWES0B DIA 6.20 SQ 5.00 M8	K11132167111	1330
KWES0B DIA 6.30 SQ 5.00 M6	K11132124109	1330
KWES0B DIA 6.30 SQ 5.00 M8	K11132124111	1330
KWES0B DIA 7.00 SQ 5.50 M9	K11132147142	1330
KWES0B DIA 7.00 SQ 5.50 M10	K11132147112	1330
KWES0B DIA 7.10 SQ 5.60 M10	K11132125112	1330
KWES0B DIA 8.00 SQ 6.00 M11	K11132168143	1330
KWES0B DIA 8.00 SQ 6.20 M8	K11132148111	1330
KWES0B DIA 8.00 SQ 6.30 M8	K11132126111	1330
KWES0B DIA 8.00 SQ 6.30 M10	K11132126112	1330
KWES0B DIA 0.255" SQ 0.191" 1/4" UNC	K11132200159	1330
KWES0B DIA 0.318" SQ 0.238" 5/16" UNC	K11132202161	1330
KWES0B DIA 2.50 SQ 2.10 1/16" UNC	K11132141201	1330
KWES0B DIA 2.80 SQ 2.10 3/32" UNC	K11132142202	1330
KWES0B DIA 2.80 SQ 2.10 5/32" UNC	K11132142203	1330
KWES0B DIA 3.50 SQ 2.70 1/8" UNC	K11132143207	1330
KWES0B DIA 3.55 SQ 2.80 3/16" UNC	K11132119106	1330
KWES0B DIA 4.00 SQ 3.00 7/32" UNC	K11132144104	1330
KWES0B DIA 4.00 SQ 3.15 7/32" UNC	K11132120105	1330
KWES0B DIA 4.50 SQ 3.40 1/4" UNC	K11132145203	1330
KWES0B DIA 4.50 SQ 3.40 5/32" UNC	K11132145105	1330
KWES0B DIA 5.00 SQ 4.00 3/16" UNC	K11132122196	1330
KWES0B DIA 5.60 SQ 4.50 7/32" UNC	K11132123197	1330
KWES0B DIA 6.30 SQ 5.00 1/4" UNC	K11132124159	1330
KWES0B DIA 6.30 SQ 5.00 5/16" UNC	K11132124161	1330
KWES0B DIA 7.00 SQ 5.50 1/4" UNC	K11132147159	1330
KWES0B DIA 7.00 SQ 5.50 1/8" UNC	K11132147207	1330
KWES0B DIA 7.10 SQ 5.60 3/8" UNC	K11132125164	1330
KWES0B DIA 8.00 SQ 6.20 5/16" UNC	K11132148161	1330
KWES0B DIA 8.00 SQ 6.30 5/16" UNC	K11132126161	1330
KWES0B DIA 0.141" SQ 0.110" NO. 06UNC	K11132191155	1330
KWES0B DIA 0.168" SQ 0.131" NO. 08" UNC	K11132192190	1330
KWES0B DIA 0.194" SQ 0.152" NO. 10UNC	K11132198157	1330
KWES0B DIA 0.220" SQ 0.165" NO. 12UNC	K11132199158	1330
KWES0B DIA 3.15 SQ 2.50 NO. 04UNC	K11132118188	1330
KWES0B DIA 3.15 SQ 2.50 NO. 05UNC	K11132118189	1330
KWES0B DIA 3.15 SQ 2.50 NO. 08UNC	K11132118156	1330
KWES0B DIA 3.55 SQ 2.80 NO. 06UNC	K11132119157	1330
KWES0B DIA 3.55 SQ 2.80 NO. 10UNC	K11132144197	1330
KWES0B DIA 4.00 SQ 3.15 NO. 12UNC	K11132163104	1330
KWES0B DIA 4.50 SQ 3.55 NO. 08UNC	K11132121156	1330
KWES0B DIA 5.00 SQ 4.00 NO. 10UNC	K11132122157	1330
KWES0B DIA 5.60 SQ 4.50 NO. 12UNC	K11132123158	1330
KWES0B DIA 0.312" SQ 0.234" 1/8" PSS	K11132225160	1330
KWES0B DIA 7.00 SQ 5.50 3/8" G(BSP)	K11132147206	1330

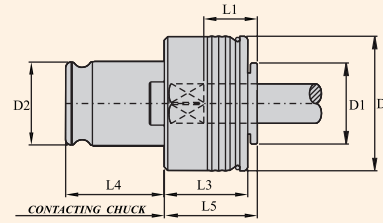
Ordering Example :- KWES0B DIA 6.20 SQ 5.00 M7 = 2 Nos.

QUICK CHANGE TAPPING CHUCK



KWES 1B

Quick Change Tapping Chuck Type KWES/B



Ordering Example : TAP ADAPTOR : KWES/1B M8 θ 10X8sq. = 2Nos.

Item Name	For Taps		Suitable for Chuck Size	D dia.	D1 dia.	D2 dia.	l1	l3	l4	l5	approx. Weight kgs.
	Thread dia.	Shank dia.									
KWES 1B	M3 - M12	3.5 - 11.3	1	32	19	19	17	25	21.5	25	0.150

Item Name	Item Code	Price INR
KWES1B DIA 2.50 SQ 2.10 M1.8	K11133141136	1330
KWES1B DIA 2.50 SQ 2.10 M2	K11133141194	1330
KWES1B DIA 2.80 SQ 2.10 M2	K11133142194	1330
KWES1B DIA 2.80 SQ 2.10 M3	K11133142104	1330
KWES1B DIA 3.15 SQ 2.50 M3	K11133118104	1330
KWES1B DIA 3.15 SQ 2.50 M4	K11133118105	1330
KWES1B DIA 3.50 SQ 2.70 M3	K11133143104	1330
KWES1B DIA 3.50 SQ 2.70 M5	K11133143108	1330
KWES1B DIA 3.55 SQ 2.80 M3.5	K11133119106	1330
KWES1B DIA 3.55 SQ 2.80 M4.5	K11133119107	1330
KWES1B DIA 4.00 SQ 3.00 M3	K11133144104	1330
KWES1B DIA 4.00 SQ 3.00 M3.5	K11133144106	1330
KWES1B DIA 4.00 SQ 3.00 M4	K11133144105	1330
KWES1B DIA 4.00 SQ 3.15 M4	K11133120105	1330
KWES1B DIA 4.00 SQ 3.15 M5	K11133120108	1330
KWES1B DIA 4.00 SQ 3.20 M3	K11133163104	1330
KWES1B DIA 4.50 SQ 3.40 M4	K11133145105	1330
KWES1B DIA 4.50 SQ 3.40 M6	K11133145109	1330
KWES1B DIA 4.50 SQ 3.55 M6	K11133121109	1330
KWES1B DIA 5.00 SQ 4.00 M4	K11133122105	1330
KWES1B DIA 5.00 SQ 4.00 M4.5	K11133122107	1330
KWES1B DIA 5.00 SQ 4.00 M5	K11133122108	1330
KWES1B DIA 5.50 SQ 4.50 M5	K11133164108	1330
KWES1B DIA 5.50 SQ 4.50 M5.5	K11133164141	1330
KWES1B DIA 5.60 SQ 4.50 M7	K11133123110	1330
KWES1B DIA 6.00 SQ 4.50 M6	K11133165109	1330
KWES1B DIA 6.00 SQ 4.90 M5	K11133146108	1330
KWES1B DIA 6.00 SQ 4.90 M6	K11133146109	1330
KWES1B DIA 6.00 SQ 4.90 M8	K11133146111	1330
KWES1B DIA 6.20 SQ 5.00 M7	K11133167110	1330
KWES1B DIA 6.20 SQ 5.00 M8	K11133167111	1330
KWES1B DIA 6.30 SQ 5.00 M6	K11133124109	1330
KWES1B DIA 6.30 SQ 5.00 M8	K11133124111	1330
KWES1B DIA 7.00 SQ 5.50 M9	K11133147142	1330
KWES1B DIA 7.00 SQ 5.50 M10	K11133147112	1330

Ordering Example :- KWES1B DIA 2.50 SQ 2.10 M1.8 = 2 Nos.



QUICK CHANGE TAPPING CHUCK

Item Name	Item Code	Price INR
KWES1B DIA 7.10 SQ 5.60 M10	K11133125112	1330
KWES1B DIA 8.00 SQ 6.00 M11	K11133168143	1330
KWES1B DIA 8.00 SQ 6.20 M11	K11133148143	1330
KWES1B DIA 8.00 SQ 6.20 M8	K11133148111	1330
KWES1B DIA 8.00 SQ 6.30 M8	K11133126111	1330
KWES1B DIA 8.00 SQ 6.30 M10	K11133126112	1330
KWES1B DIA 8.50 SQ 6.50 M12	K11133170113	1330
KWES1B DIA 9.00 SQ 7.00 M12	K11133149113	1330
KWES1B DIA 9.00 SQ 7.10 M12	K11133127113	1330
KWES1B DIA 10.00 SQ 8.00 M10	K11133128112	1330
KWES1B DIA 10.50 SQ 8.00 M14	K11133172114	1330
KWES1B DIA 10.50 SQ 8.00 M15	K11133172144	1330
KWES1B DIA 11.00 SQ 9.00 M14	K11133150114	1330
KWES1B DIA 11.20 SQ 9.00 M14	K11133129114	1330
KWES1B DIA 0.255" SQ 0.191" 1/4" UNC	K11133200159	1330
KWES1B DIA 0.318" SQ 0.238" 5/16" UNC	K11133202161	1330
KWES1B DIA 0.323" SQ 0.242" 7/16" UNC	K11133193162	1330
KWES1B DIA 0.367" SQ 0.275" 1/2" UNC	K11133194163	1330
KWES1B DIA 0.381" SQ 0.286" 3/8" UNC	K11133195164	1330
KWES1B DIA 0.429" SQ 0.322" 9/16" UNC	K11133196166	1330
KWES1B DIA 2.50 SQ 2.10 1/16" UNC	K11133141201	1330
KWES1B DIA 2.80 SQ 2.10 3/32" UNC	K11133142202	1330
KWES1B DIA 2.80 SQ 2.10 5/32" UNC	K11133142203	1330
KWES1B DIA 3.50 SQ 2.70 1/8" UNC	K11133143207	1330
KWES1B DIA 3.55 SQ 2.80 3/16" UNC	K11133119196	1330
KWES1B DIA 4.00 SQ 3.00 7/32" UNC	K11133144197	1330
KWES1B DIA 4.00 SQ 3.15 7/32" UNC	K11133120197	1330
KWES1B DIA 4.50 SQ 3.40 1/4" UNC	K11133145159	1330
KWES1B DIA 4.50 SQ 3.40 5/32" UNC	K11133145203	1330
KWES1B DIA 4.50 SQ 3.55 1/4" UNC	K11133121159	1330
KWES1B DIA 5.00 SQ 4.00 3/16" UNC	K11133122196	1330
KWES1B DIA 5.60 SQ 4.50 7/32" UNC	K11133123197	1330
KWES1B DIA 6.30 SQ 5.00 1/4" UNC	K11133124159	1330
KWES1B DIA 6.30 SQ 5.00 5/16" UNC	K11133124161	1330
KWES1B DIA 7.00 SQ 5.50 1/4" UNC	K11133147159	1330
KWES1B DIA 7.00 SQ 5.50 3/8" UNC	K11133147164	1330
KWES1B DIA 7.10 SQ 5.60 3/8" UNC	K11133125164	1330
KWES1B DIA 8.00 SQ 6.20 5/16" UNC	K11133148161	1330
KWES1B DIA 8.00 SQ 6.20 7/16" UNC	K11133148162	1330
KWES1B DIA 8.00 SQ 6.30 5/16" UNC	K11133126161	1330
KWES1B DIA 8.00 SQ 6.30 7/16" UNC	K11133126162	1330
KWES1B DIA 9.00 SQ 7.00 1/2" UNC	K11133149163	1330
KWES1B DIA 9.00 SQ 7.00 3/8" UNC	K11133149164	1330
KWES1B DIA 9.00 SQ 7.10 1/2" UNC	K11133127163	1330

Ordering Example :- KWES1B DIA 7.10 SQ 5.60 M10 = 2 Nos.

QUICK CHANGE TAPPING CHUCK

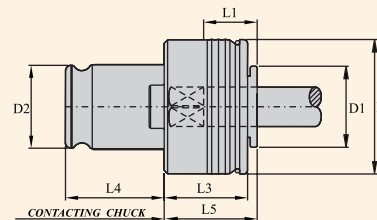


Item Name	Item Code	Price INR
KWES1B DIA 10.00 SQ 8.00 3/8" UNC	K11133128164	1330
KWES1B DIA 11.00 SQ 9.00 9/16" UNC	K11133150166	1330
KWES1B DIA 11.20 SQ 9.00 9/16" UNC	K11133129166	1330
KWES1B DIA 0.141" SQ 0.110" NO. 06UNC	K11133191155	1330
KWES1B DIA 0.168" SQ 0.131" NO. 08UNC	K11133192156	1330
KWES1B DIA 0.194" SQ 0.152" NO. 10UNC	K11133198157	1330
KWES1B DIA 0.220" SQ 0.165" NO. 12UNC	K11133199158	1330
KWES1B DIA 3.15 SQ 2.50 NO. 04UNC	K11133118188	1330
KWES1B DIA 3.15 SQ 2.50 NO. 05UNC	K11133118189	1330
KWES1B DIA 3.15 SQ 2.50 NO. 08UNC	K11133118156	1330
KWES1B DIA 3.55 SQ 2.80 NO. 06UNC	K11133119155	1330
KWES1B DIA 3.55 SQ 2.80 NO. 10UNC	K11133119157	1330
KWES1B DIA 4.00 SQ 3.15 NO. 12UNC	K11133120158	1330
KWES1B DIA 4.50 SQ 3.55 NO. 08UNC	K11133121156	1330
KWES1B DIA 5.00 SQ 4.00 NO. 10UNC	K11133122157	1330
KWES1B DIA 5.60 SQ 4.50 NO. 12UNC	K11133123158	1330
KWES1B DIA 0.312" SQ 0.234" 1/8" PSS	K11133225160	1330
KWES1B DIA 0.437" SQ 0.328 1/8" PLS	K11133197165	1330
KWES1B DIA 11.00 SQ 9.00 1/4" G(BSP)	K11133150205	1330
KWES1B DIA 12.00 SQ 9.00 3/8" G(BSP)	K11133151206	1330
KWES1B DIA 7.00 SQ 5.50 1/8" G(BSP)	K11133147204	1330
KWES1B DIA 12.00 SQ 9.00 M16 (FINE PITCH)	K11133151137	1330

Ordering Example :- KWES1B DIA 10.00 SQ 8.00 3/8" UNC = 2 Nos.

KWES 2B

Quick Change Tapping Chuck Type KWES/B



Ordering Example : TAP ADAPTOR : KWES/1B M8 Ø 10X8sq. = 2Nos.

Item Name	For Taps		Suitable for Chuck Size	D dia.	D1 dia.	D2 dia.	l1	l3	l4	l5	approx. Weight kgs.
	Thread dia.	Shank dia.									
KWES 2B	M8-M20	7.0 - 18.0	2	50	30	31	30	31	35.0	34	0.550



QUICK CHANGE TAPPING CHUCK

KWES 2B

Item Name	Item Code	Price INR
KWES2B DIA 6.00 SQ 4.90 M5	K11134146108	1750
KWES2B DIA 6.00 SQ 4.90 M6	K11134146109	1750
KWES2B DIA 6.00 SQ 4.90 M8	K11134146111	1750
KWES2B DIA 6.00 SQ 5.00 M6	K11134224109	1750
KWES2B DIA 6.00 SQ 5.00 M8	K11134224111	1750
KWES2B DIA 6.20 SQ 5.00 M7	K11134167110	1750
KWES2B DIA 6.20 SQ 5.00 M8	K11134167111	1750
KWES2B DIA 6.30 SQ 5.00 M6	K11134124109	1750
KWES2B DIA 7.00 SQ 5.50 M9	K11134147142	1750
KWES2B DIA 7.00 SQ 5.50 M10	K11134147112	1750
KWES2B DIA 7.10 SQ 5.60 M10	K11134125112	1750
KWES2B DIA 8.00 SQ 6.00 M11	K11134168143	1750
KWES2B DIA 8.00 SQ 6.20 M11	K11134148143	1750
KWES2B DIA 8.00 SQ 6.20 M8	K11134148111	1750
KWES2B DIA 8.00 SQ 6.30 M8	K11134126111	1750
KWES2B DIA 8.00 SQ 6.30 M10	K11134126112	1750
KWES2B DIA 8.50 SQ 6.50 M12	K11134170113	1750
KWES2B DIA 9.00 SQ 7.00 M12	K11134149113	1750
KWES2B DIA 9.00 SQ 7.10 M12	K11134127113	1750
KWES2B DIA 10.00 SQ 8.00 M10	K11134128112	1750
KWES2B DIA 10.50 SQ 8.00 M14	K11134172114	1750
KWES2B DIA 10.50 SQ 8.00 M15	K11134172144	1750
KWES2B DIA 11.00 SQ 9.00 M14	K11134150114	1750
KWES2B DIA 11.20 SQ 9.00 M14	K11134129114	1750
KWES2B DIA 12.00 SQ 9.00 M16	K11134151115	1750
KWES2B DIA 12.50 SQ 10.00 M16	K11134130115	1750
KWES2B DIA 13.00 SQ 10.00 M17	K11134173145	1750
KWES2B DIA 14.00 SQ 11.00 M18	K11134152116	1750
KWES2B DIA 14.00 SQ 11.20 M18	K11134131116	1750
KWES2B DIA 14.00 SQ 11.20 M20	K11134131117	1750
KWES2B DIA 15.00 SQ 12.00 M20	K11134174117	1750
KWES2B DIA 16.00 SQ 12.00 M20	K11134153117	1750
KWES2B DIA 16.00 SQ 12.50 M22	K11134132118	1750
KWES2B DIA 17.00 SQ 13.00 M22	K11134175118	1750
KWES2B DIA 18.00 SQ 14.00 M24	K11134133119	1750
KWES2B DIA 18.00 SQ 14.50 M22	K11134154118	1750
KWES2B DIA 18.00 SQ 14.50 M24	K11134154119	1750
KWES2B DIA 19.00 SQ 15.00 M24	K11134176119	1750
KWES2B DIA 0.255" SQ 0.191" 1/4" UNC	K11134200159	1750
KWES2B DIA 0.318" SQ 0.238" 5/16" UNC	K11134202161	1750
KWES2B DIA 0.323" SQ 0.242" 7/16" UNC	K11134193162	1750
KWES2B DIA 0.367" SQ 0.275" 1/2" UNC	K11134194163	1750
KWES2B DIA 0.381" SQ 0.286" 3/8" UNC	K11134195164	1750

Ordering Example :-KWES2B DIA 0.255" SQ 0.191" 1/4" UNC = 2 Nos.

QUICK CHANGE TAPPING CHUCK



Item Name	Item Code	Price Euro
KWES2B DIA 0.429" SQ 0.322" 9/16" UNC	K11134196166	1750
KWES2B DIA 0.480" SQ 0.360" 5/8" UNC	K11134203168	1750
KWES2B DIA 0.542" SQ 0.406" 11/16" UNC	K11134204169	1750
KWES2B DIA 0.590" SQ 0.442" 3/4" UNC	K11134206171	1750
KWES2B DIA 0.652" SQ 0.489" 13/16" UNC	K11134207172	1750
KWES2B DIA 0.697" SQ 0.523" 7/8" UNC	K11134209174	1750
KWES2B DIA 6.30 SQ 5.00 1/4" UNC	K11134124159	1750
KWES2B DIA 6.30 SQ 5.00 5/16" UNC	K11134124161	1750
KWES2B DIA 7.00 SQ 5.50 1/4" UNC	K11134147159	1750
KWES2B DIA 7.00 SQ 5.50 3/8" UNC	K11134147164	1750
KWES2B DIA 7.10 SQ 5.60 3/8" UNC	K11134125164	1750
KWES2B DIA 8.00 SQ 6.20 5/16" UNC	K11134148161	1750
KWES2B DIA 8.00 SQ 6.20 7/16" UNC	K11134148162	1750
KWES2B DIA 8.00 SQ 6.30 5/16" UNC	K11134126161	1750
KWES2B DIA 8.00 SQ 6.30 7/16" UNC	K11134126162	1750
KWES2B DIA 9.00 SQ 7.00 1/2" UNC	K11134149163	1750
KWES2B DIA 9.00 SQ 7.00 3/8" UNC	K11134149164	1750
KWES2B DIA 9.00 SQ 7.10 1/2" UNC	K11134127163	1750
KWES2B DIA 10.00 SQ 8.00 3/8" UNC	K11134128164	1750
KWES2B DIA 11.00 SQ 9.00 9/16" UNC	K11134150166	1750
KWES2B DIA 11.20 SQ 9.00 9/16" UNC	K11134129166	1750
KWES2B DIA 12.00 SQ 9.00 5/8" UNC	K11134151168	1750
KWES2B DIA 12.50 SQ 10.00 5/8" UNC	K11134130168	1750
KWES2B DIA 14.00 SQ 11.00 11/16" UNC	K11134152169	1750
KWES2B DIA 16.00 SQ 12.00 13/16" UNC	K11134153172	1750
KWES2B DIA 18.00 SQ 14.50 15/16" UNC	K11134154177	1750
KWES2B DIA 18.00 SQ 14.50 7/8" UNC	K11134154174	1750
KWES2B DIA 0.312" SQ 0.234" 1/8" PSS	K11134225160	1750
KWES2B DIA 0.437" SQ 0.328 1/8" PLC	K11134197167	1750
KWES2B DIA 0.562" SQ 0.421" 1/4" P	K11134205170	1750
KWES2B DIA 0.687" SQ 0.515" 1/2" P	K11134208173	1750
KWES2B DIA 0.700" SQ 0.531" 3/8" P	K11134210175	1750
KWES2B DIA 7.00 SQ 5.50 1/8" G(BSP)	K11134147204	1750
KWES2B DIA 11.00 SQ 9.00 1/4" G(BSP)	K11134150205	1750
KWES2B DIA 12.00 SQ 9.00 3/8" G(BSP)	K11134151206	1750
KWES2B DIA 16.00 SQ 12.00 1/2" G(BSP)	K11134153210	1750
KWES2B DIA 16.00 SQ 12.00 1/4" G(BSP)	K11134153205	1750
KWES2B DIA 18.00 SQ 14.50 5/8" G(BSP)	K11134154208	1750
KWES2B DIA 20.00 SQ 16.00 3/4" G(BSP)	K11134134209	1750
KWES2B DIA 19.00 SQ 15.00 M25 (FINE PITCH)	K11134176146	1750
KWES2B DIA 20.00 SQ 15.00 M26 (FINE PITCH)	K11134177195	1750
KWES2B DIA 20.00 SQ 15.00 M27 (FINE PITCH)	K11134177120	1750
KWES2B DIA 20.00 SQ 16.00 M27 (FINE PITCH)	K11134134120	1750
KWES2B DIA 20.00 SQ 16.00 M30 (FINE PITCH)	K11134134121	1750

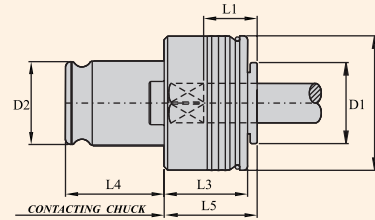
Ordering Example :- KWES2B DIA 0.429" SQ 0.322" 9/16" UNC = 2 Nos.



QUICK CHANGE TAPPING CHUCK

KWES 3B

Quick Change Tapping Chuck Type KWES/B



Ordering Example : TAP ADAPTOR : KWES/1B M8 θ 10X8sq. = 2Nos.

Item Name	For Taps		Suitable for Chuck Size	D dia.	D1 dia.	D2 dia.	l1	l3	l4	l5	approx. Weight kgs.
	Thread dia.	Shank dia.									
KWES 3B	M14 - M33	11.0 - 28.0	3	72	48	48	44	41	55.5	45	1.700

Item Name	Item Code	Price INR
KWES3B DIA 11.00 SQ 9.00 M14	K11135150114	4990
KWES3B DIA 11.20 SQ 9.00 M14	K11135129114	4990
KWES3B DIA 12.00 SQ 9.00 M16	K11135151115	4990
KWES3B DIA 12.50 SQ 10.00 M16	K11135130115	4990
KWES3B DIA 13.00 SQ 10.00 M17	K11135173145	4990
KWES3B DIA 14.00 SQ 11.00 M18	K11135152116	4990
KWES3B DIA 14.00 SQ 11.20 M18	K11135131116	4990
KWES3B DIA 14.00 SQ 11.20 M20	K11135131117	4990
KWES3B DIA 15.00 SQ 12.00 M20	K11135174117	4990
KWES3B DIA 16.00 SQ 12.00 M20	K11135153117	4990
KWES3B DIA 16.00 SQ 12.50 M22	K11135132118	4990
KWES3B DIA 17.00 SQ 13.00 M22	K11135175118	4990
KWES3B DIA 18.00 SQ 14.00 M24	K11135133119	4990
KWES3B DIA 18.00 SQ 14.50 M22	K11135154118	4990
KWES3B DIA 18.00 SQ 14.50 M24	K11135154119	4990
KWES3B DIA 19.00 SQ 15.00 M24	K11135176119	4990
KWES3B DIA 19.00 SQ 15.00 M25	K11135176147	4990
KWES3B DIA 20.00 SQ 15.00 M26	K11135177148	4990
KWES3B DIA 20.00 SQ 15.00 M27	K11135177122	4990
KWES3B DIA 20.00 SQ 16.00 M27	K11135134122	4990
KWES3B DIA 20.00 SQ 16.00 M30	K11135134123	4990
KWES3B DIA 21.00 SQ 17.00 M28	K11135178149	4990
KWES3B DIA 22.00 SQ 18.00 M30	K11135155123	4990
KWES3B DIA 22.40 SQ 18.00 M33	K11135135124	4990
KWES3B DIA 23.00 SQ 17.00 M30	K11135180123	4990
KWES3B DIA 24.00 SQ 19.00 M32	K11135181150	4990
KWES3B DIA 25.00 SQ 19.00 M33	K11135186124	4990
KWES3B DIA 25.00 SQ 20.00 M33	K11135136124	4990
KWES3B DIA 25.00 SQ 20.00 M36	K11135136125	4990
KWES3B DIA 26.00 SQ 21.00 M34	K11135182151	4990
KWES3B DIA 26.00 SQ 21.00 M35	K11135182152	4990
KWES3B DIA 28.00 SQ 21.00 M36	K11135187125	4990
KWES3B DIA 28.00 SQ 21.00 M38	K11135187153	4990
KWES3B DIA 28.00 SQ 22.00 M36	K11135156125	4990
KWES3B DIA 30.00 SQ 23.00 M39	K11135183138	4990

QUICK CHANGE TAPPING CHUCK



Item Name	Item Code	Price INR
KWES3B DIA 30.00 SQ 23.00 M40	K11135183154	4990
KWES3B DIA 32.00 SQ 24.00 M39	K11135157138	4990
KWES3B DIA 32.00 SQ 24.00 M42	K11135157129	4990
KWES3B DIA 32.00 SQ 26.00 M42	K11135184129	4990
KWES3B DIA 0.590" SQ 0.442" 3/4" UNC	K11135206171	4990
KWES3B DIA 0.652" SQ 0.489" 16/16" UNC	K11135207176	4990
KWES3B DIA 0.697" SQ 0.523" 7/8" UNC	K11135209174	4990
KWES3B DIA 0.760" SQ 0.570" 15/16" UNC	K11135211177	4990
KWES3B DIA 0.800" SQ 0.600" 1" UNC	K11135212178	4990
KWES3B DIA 0.896" SQ 0.672" 1-1/8" UNC	K11135213179	4990
KWES3B DIA 1.021" SQ 0.766" 1-1/4" UNC	K11135215181	4990
KWES3B DIA 1.108" SQ 0.831" 1-3/8" UNC	K11135216182	4990
KWES3B DIA 1.233" SQ 0.925" 1-1/2" UNC	K11135218184	4990
KWES3B DIA 11.00 SQ 9.00 9/16" UNC	K11135150166	4990
KWES3B DIA 11.20 SQ 9.00 9/16" UNC	K11135129166	4990
KWES3B DIA 12.00 SQ 9.00 5/8" UNC	K11135151168	4990
KWES3B DIA 12.50 SQ 10.00 5/8" UNC	K11135130168	4990
KWES3B DIA 14.00 SQ 11.00 11/16" UNC	K11135152169	4990
KWES3B DIA 14.00 SQ 11.20 11/16" UNC	K11135131169	4990
KWES3B DIA 14.00 SQ 11.20 3/4" UNC	K11135131171	4990
KWES3B DIA 16.00 SQ 12.00 13/16" UNC	K11135153172	4990
KWES3B DIA 16.00 SQ 12.50 7/8" UNC	K11135132174	4990
KWES3B DIA 18.00 SQ 14.00 1" UNC	K11135133178	4990
KWES3B DIA 18.00 SQ 14.50 15/16" UNC	K11135154177	4990
KWES3B DIA 18.00 SQ 14.50 7/8" UNC	K11135154174	4990
KWES3B DIA 20.00 SQ 16.00 1" UNC	K11135134178	4990
KWES3B DIA 20.00 SQ 16.00 1-1/8" UNC	K11135134179	4990
KWES3B DIA 22.00 SQ 18.00 1-1/8" UNC	K11135155179	4990
KWES3B DIA 22.40 SQ 18.00 1-1/4" UNC	K11135135181	4990
KWES3B DIA 25.00 SQ 20.00 1-1/4" UNC	K11135136181	4990
KWES3B DIA 25.00 SQ 20.00 1-3/8" UNC	K11135136182	4990
KWES3B DIA 28.00 SQ 22.00 1-3/8" UNC	K11135156182	4990
KWES3B DIA 0.687" SQ 0.515" 1/2" P	K11135208173	4990
KWES3B DIA 0.700" SQ 0.531" 3/8" P	K11135210175	4990
KWES3B DIA 0.906" SQ 0.679" 3/4" P	K11135214180	4990
KWES3B DIA 1.125" SQ 0.843" 1" P	K11135217183	4990
KWES3B DIA 1.312" SQ 0.984" 1-1/4" P	K11135219185	4990
KWES3B DIA 16.00 SQ 12.00 1/2" G(BSP)	K11135153210	4990
KWES3B DIA 18.00 SQ 14.50 5/8" G(BSP)	K11135154208	4990
KWES3B DIA 20.00 SQ 16.00 3/4" G(BSP)	K11135134209	4990
KWES3B DIA 22.00 SQ 18.00 7/8" G(BSP)	K11135155211	4990
KWES3B DIA 25.00 SQ 20.00 1" G(BSP)	K11135136212	4990
KWES3B DIA 28.00 SQ 22.00 1-1/8" G(BSP)	K11135156213	4990
KWES3B DIA 32.00 SQ 24.00 1-1/4" G(BSP)	K11135157214	4990
KWES3B DIA 36.00 SQ 29.00 1-1/2" G(BSP)	K11135158216	4990
KWES3B DIA 36.00 SQ 29.00 1-3/4" G(BSP)	K11135158217	4990

Ordering Example :- KWES3B DIA 30.00 SQ 23.00 M40 = 2 Nos.



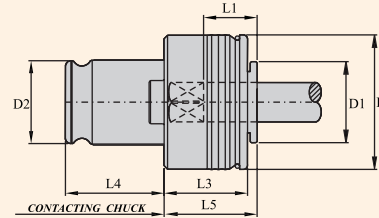
QUICK CHANGE TAPPING CHUCK

Item Name	Item Code	Price INR
KWES3B DIA 36.00 SQ 29.00 1-3/8" G(BSP)	K11135158215	4990
KWES3B DIA 36.00 SQ 29.00 2" G(BSP)	K11135158218	4990
KWES3B DIA 28.00 SQ 22.40 M39 (FINE PITCH)	K11135137126	4990
KWES3B DIA 28.00 SQ 22.40 M42 (FINE PITCH)	K11135137127	4990
KWES3B DIA 31.50 SQ 25.00 M44 (FINE PITCH)	K11135138128	4990
KWES3B DIA 31.50 SQ 25.00 M48 (FINE PITCH)	K11135138140	4990
KWES3B DIA 35.00 SQ 26.00 M45 (FINE PITCH)	K11135185139	4990
KWES3B DIA 36.00 SQ 29.00 M45 (FINE PITCH)	K11135158139	4990
KWES3B DIA 36.00 SQ 29.00 M48 (FINE PITCH)	K11135158140	4990
KWES3B DIA 38.00 SQ 29.00 M48 (FINE PITCH)	K11135188140	4990

Ordering Example :- KWES3B DIA 36.00 SQ 29.00 1-3/8" G(BSP) = 2 Nos.

KWES 4B

Quick Change Tapping Chuck Type KWES/B



Ordering Example : TAP ADAPTOR : KWES/1B M8 0 10X8sq. = 2Nos.

Item Name	For Taps		Suitable for Chuck Size	D dia.	D1 dia.	D2 dia.	l1	l3	l4	l5	approx. Weight kgs.
	Thread dia.	Shank dia.									
KWES 4B	M22 - M48	18.0 - 36.0	4	95	60	60	71	61	63.0	68	3.300

Item Name	Item Code	Price INR
KWES4B DIA 16.00 SQ 12.50 M22	K11136132118	4990
KWES4B DIA 17.00 SQ 13.00 M22	K11136175118	4990
KWES4B DIA 18.00 SQ 14.00 M24	K11136133119	4990
KWES4B DIA 18.00 SQ 14.50 M22	K11136154118	4990
KWES4B DIA 18.00 SQ 14.50 M24	K11136154119	4990
KWES4B DIA 19.00 SQ 15.00 M24	K11136176119	4990
KWES4B DIA 19.00 SQ 15.00 M25	K11136176147	4990
KWES4B DIA 20.00 SQ 15.00 M26	K11136177148	4990
KWES4B DIA 20.00 SQ 15.00 M27	K11136177122	4990
KWES4B DIA 20.00 SQ 16.00 M27	K11136134122	4990
KWES4B DIA 20.00 SQ 16.00 M30	K11136134123	4990
KWES4B DIA 21.00 SQ 17.00 M28	K11136178149	4990
KWES4B DIA 22.00 SQ 18.00 M30	K11136155123	4990
KWES4B DIA 22.40 SQ 18.00 M33	K11136135124	4990
KWES4B DIA 23.00 SQ 17.00 M30	K11136180123	4990
KWES4B DIA 24.00 SQ 19.00 M32	K11136181150	4990
KWES4B DIA 25.00 SQ 19.00 M33	K11136186124	4990
KWES4B DIA 25.00 SQ 20.00 M33	K11136136124	4990
KWES4B DIA 25.00 SQ 20.00 M36	K11136136125	4990

Ordering Example :- KWES4B DIA 16.00 SQ 12.50 M22 = 2 Nos.

QUICK CHANGE TAPPING CHUCK



Item Name	Item Code	Price INR
KWES4B DIA 26.00 SQ 21.00 M34	K11136182151	8315
KWES4B DIA 26.00 SQ 21.00 M35	K11136182152	8315
KWES4B DIA 28.00 SQ 21.00 M36	K11136187125	8315
KWES4B DIA 28.00 SQ 21.00 M38	K11136187153	8315
KWES4B DIA 28.00 SQ 22.00 M36	K11136156125	8315
KWES4B DIA 28.00 SQ 22.40 M39	K11136137138	8315
KWES4B DIA 28.00 SQ 22.40 M42	K11136137129	8315
KWES4B DIA 30.00 SQ 23.00 M39	K11136183138	8315
KWES4B DIA 30.00 SQ 23.00 M40	K11136183154	8315
KWES4B DIA 31.50 SQ 25.00 M45	K11136138130	8315
KWES4B DIA 31.50 SQ 25.00 M48	K11136138131	8315
KWES4B DIA 32.00 SQ 24.00 M39	K11136157138	8315
KWES4B DIA 32.00 SQ 24.00 M42	K11136157129	8315
KWES4B DIA 32.00 SQ 26.00 M42	K11136184129	8315
KWES4B DIA 35.00 SQ 26.00 M45	K11136185130	8315
KWES4B DIA 36.00 SQ 29.00 M45	K11136158130	8315
KWES4B DIA 36.00 SQ 29.00 M48	K11136158131	8315
KWES4B DIA 38.00 SQ 29.00 M48	K11136188131	8315
KWES4B DIA 0.800" SQ 0.600" 1" UNC	K11136212178	8315
KWES4B DIA 0.896" SQ 0.672" 1-1/8" UNC	K11136213179	8315
KWES4B DIA 1.021" SQ 0.766" 1-1/4" UNC	K11136215181	8315
KWES4B DIA 1.108" SQ 0.831" 1-3/8" UNC	K11136216182	8315
KWES4B DIA 1.233" SQ 0.925" 1-1/2" UNC	K11136218184	8315
KWES4B DIA 1.430" SQ 1.072" 1-3/4" UNC	K11136221186	8315
KWES4B DIA 16.00 SQ 12.50 7/8" UNC	K11136132174	8315
KWES4B DIA 18.00 SQ 14.00 1" UNC	K11136133178	8315
KWES4B DIA 18.00 SQ 14.50 15/16" UNC	K11136154177	8315
KWES4B DIA 18.00 SQ 14.50 7/8" UNC	K11136154174	8315
KWES4B DIA 20.00 SQ 16.00 1" UNC	K11136134178	8315
KWES4B DIA 20.00 SQ 16.00 1-1/8" UNC	K11136134179	8315
KWES4B DIA 22.00 SQ 18.00 1-1/8" UNC	K11136155179	8315
KWES4B DIA 22.40 SQ 18.00 1-1/4" UNC	K11136135181	8315
KWES4B DIA 25.00 SQ 20.00 1-1/4" UNC	K11136136181	8315
KWES4B DIA 25.00 SQ 20.00 1-3/8" UNC	K11136136182	8315
KWES4B DIA 28.00 SQ 22.00 1-3/8" UNC	K11136156182	8315
KWES4B DIA 28.00 SQ 22.40 1-1/2" UNC	K11136137184	8315
KWES4B DIA 31.50 SQ 25.00 1-3/4" UNC	K11136138186	8315
KWES4B DIA 32.00 SQ 24.00 1-1/2" UNC	K11136157184	8315
KWES4B DIA 32.00 SQ 24.00 1-5/8" UNC	K11136157219	8315
KWES4B DIA 35.50 SQ 28.00 2" UNC	K11136139198	8315
KWES4B DIA 36.00 SQ 29.00 1-3/4" UNC	K11136158186	8315
KWES4B DIA 36.00 SQ 29.00 1-7/8" UNC	K11136158220	8315
KWES4B DIA 40.00 SQ 31.50 2-1/2" UNC	K11136220200	8315
KWES4B DIA 40.00 SQ 31.50 2-1/4" UNC	K11136220199	8315
KWES4B DIA 40.00 SQ 32.00 1-7/8" UNC	K11136160220	8315

Ordering Example :-KWES4B DIA 18.00 SQ 14.50 M24 = 2 Nos.



QUICK CHANGE TAPPING CHUCK

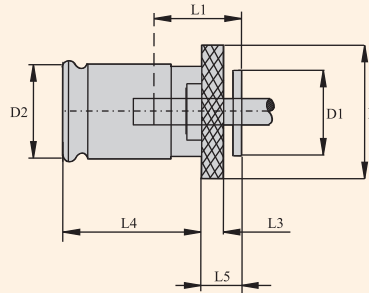
Item Name	Item Code	Price INR
KWES4B DIA 40.00 SQ 32.00 2" UNC	K11136160198	8315
KWES4B DIA 45.00 SQ 35.00 2-1/4" UNC	K11136161199	8315
KWES4B DIA 0.906" SQ 0.679" 3/4" P	K11136214180	8315
KWES4B DIA 1.125" SQ 0.843" 1" P	K11136217183	8315
KWES4B DIA 1.312" SQ 0.984" 1-1/4" P	K11136219185	8315
KWES4B DIA 1.500" SQ 1.125" 1-1/2" P	K11136222187	8315
KWES4B DIA 18.00 SQ 14.50 5/8" G(BSP)	K11136154208	8315
KWES4B DIA 20.00 SQ 16.00 3/4" G(BSP)	K11136134209	8315
KWES4B DIA 22.00 SQ 18.00 7/8" G(BSP)	K11136155211	8315
KWES4B DIA 25.00 SQ 20.00 1" G(BSP)	K11136136212	8315
KWES4B DIA 28.00 SQ 22.00 1-1/8" G(BSP)	K11136156213	8315
KWES4B DIA 32.00 SQ 24.00 1-1/4" G(BSP)	K11136157214	8315
KWES4B DIA 36.00 SQ 29.00 1-1/2" G(BSP)	K11136158216	8315
KWES4B DIA 36.00 SQ 29.00 1-3/4" G(BSP)	K11136158217	8315
KWES4B DIA 36.00 SQ 29.00 1-3/8" G(BSP)	K11136158215	8315
KWES4B DIA 36.00 SQ 29.00 2" G(BSP)	K11136158218	8315
KWES4B DIA 40.00 SQ 32.00 2-1/4" G(BSP)	K11136160221	8315
KWES4B DIA 45.00 SQ 35.00 2-1/2" G(BSP)	K11136161222	8315
KWES4B DIA 35.50 SQ 28.00 M52 (FINE PITCH)	K11136139132	8315
KWES4B DIA 35.50 SQ 28.00 M56 (FINE PITCH)	K11136139133	8315
KWES4B DIA 40.00 SQ 31.50 M60 (FINE PITCH)	K11136220134	8315
KWES4B DIA 40.00 SQ 32.00 M52 (FINE PITCH)	K11136160132	8315
KWES4B DIA 45.00 SQ 35.00 M56 (FINE PITCH)	K11136161133	8315
KWES4B DIA 45.00 SQ 35.00 M60 (FINE PITCH)	K11136161134	8315

Ordering Example :- KWES4B DIA 40.00 SQ 32.00 2" UNC = 2 Nos.

TAP ADAPTOR (WITHOUT SAFETY CLUTCH) TYPE - KWE



KWE 0



Item Name	For Taps		Suitable for Chuck Size	D dia.	D1 dia.	D2 dia.	l1	l3	l4	l5	approx. Weight kgs.
	Thread dia.	Shank dia.									
KWE 0	M1 - M10	2.5 - 7.2	0	22	13	13	15	4	19.5	7	3.030

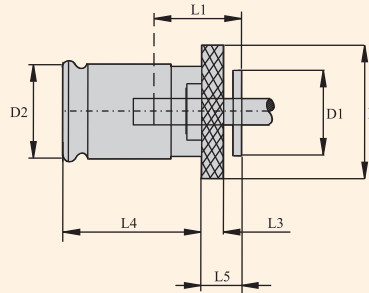
Item Name	Item Code	Price INR
KWE0 DIA 0.141" SQ 0.110"	K11128191193	490
KWE0 DIA 0.168" SQ 0.131"	K11128192193	490
KWE0 DIA 0.194" SQ 0.152"	K11128198193	490
KWE0 DIA 0.220" SQ 0.165"	K11128199193	490
KWE0 DIA 0.255" SQ 0.191"	K11128200193	490
KWE0 DIA 0.313" SQ 0.234"	K11128201193	490
KWE0 DIA 0.318" SQ 0.238"	K11128202193	490
KWE0 DIA 2.50 SQ 2.10	K11128141193	490
KWE0 DIA 2.80 SQ 2.10	K11128142193	490
KWE0 DIA 3.00 SQ 2.50	K11128162193	490
KWE0 DIA 3.15 SQ 2.50	K11128118193	490
KWE0 DIA 3.50 SQ 2.70	K11128143193	490
KWE0 DIA 3.55 SQ 2.80	K11128119193	490
KWE0 DIA 4.00 SQ 3.00	K11128144193	490
KWE0 DIA 4.00 SQ 3.15	K11128120193	490
KWE0 DIA 4.00 SQ 3.20	K11128163193	490
KWE0 DIA 4.50 SQ 3.40	K11128145193	490
KWE0 DIA 4.50 SQ 3.55	K11128121193	490
KWE0 DIA 5.00 SQ 4.00	K11128122193	490
KWE0 DIA 5.50 SQ 4.50	K11128164193	490
KWE0 DIA 5.60 SQ 4.50	K11128123193	490
KWE0 DIA 6.00 SQ 4.50	K11128165193	490
KWE0 DIA 6.00 SQ 4.90	K11128146193	490
KWE0 DIA 6.10 SQ 5.00	K11128166193	490
KWE0 DIA 6.20 SQ 5.00	K11128167193	490
KWE0 DIA 6.30 SQ 5.00	K11128124193	490
KWE0 DIA 7.00 SQ 5.50	K11128147193	490
KWE0 DIA 7.10 SQ 5.60	K11128125193	490
KWE0 DIA 8.00 SQ 6.00	K11128168193	490
KWE0 DIA 8.00 SQ 6.20	K11128148193	490
KWE0 DIA 8.00 SQ 6.30	K11128126193	490
KWE0 DIA 8.50 SQ 6.50	K11128170193	490

Ordering Example :-KWE0 DIA 0.141" SQ 0.110" = 2 Nos.



TAP ADAPTOR (WITHOUT SAFETY CLUTCH) TYPE - KWE

KWE 1



Item Name	For Taps		Suitable for Chuck Size	D dia.	D1 dia.	D2 dia.	l1	l3	l4	l5	approx. Weight kgs.
	Thread dia.	Shank dia.									
KWE 1	M3 - M12	3.5 - 11.3	1	30	19	19	17	4	21.5	7	0.060

Item Name	Item Code	Price INR
KWE1 DIA 0.141" SQ 0.110"	K1112919193	490
KWE1 DIA 0.168" SQ 0.131"	K11129192193	490
KWE1 DIA 0.194" SQ 0.152"	K11129198193	490
KWE1 DIA 0.220" SQ 0.165"	K11129199193	490
KWE1 DIA 0.255" SQ 0.191"	K11129200193	490
KWE1 DIA 0.313" SQ 0.234"	K11129201193	490
KWE1 DIA 0.318" SQ 0.238"	K11129202193	490
KWE1 DIA 0.323" SQ 0.242"	K11129193193	490
KWE1 DIA 0.367" SQ 0.275"	K11129194193	490
KWE1 DIA 0.381" SQ 0.286"	K11129195193	490
KWE1 DIA 0.429" SQ 0.322"	K11129196193	490
KWE1 DIA 0.437" SQ 0.328	K11129197193	490
KWE1 DIA 10.00 SQ 8.00	K11129128193	490
KWE1 DIA 10.50 SQ 8.00	K11129172193	490
KWE1 DIA 11.00 SQ 9.00	K11129150193	490
KWE1 DIA 11.20 SQ 9.00	K11129129193	490
KWE1 DIA 12.00 SQ 9.00	K11129151193	490
KWE1 DIA 2.50 SQ 2.10	K11129141193	490
KWE1 DIA 2.80 SQ 2.10	K11129142193	490
KWE1 DIA 20.00 SQ 15.00	K11129177193	490
KWE1 DIA 3.00 SQ 2.50	K11129162193	490
KWE1 DIA 3.15 SQ 2.50	K11129118193	490
KWE1 DIA 3.50 SQ 2.70	K11129143193	490
KWE1 DIA 3.55 SQ 2.80	K11129119193	490
KWE1 DIA 4.00 SQ 3.00	K11129144193	490
KWE1 DIA 4.00 SQ 3.15	K11129120193	490
KWE1 DIA 4.00 SQ 3.20	K11129163193	490
KWE1 DIA 4.50 SQ 3.40	K11129145193	490
KWE1 DIA 4.50 SQ 3.55	K11129121193	490
KWE1 DIA 5.00 SQ 4.00	K11129122193	490
KWE1 DIA 5.50 SQ 4.50	K11129164193	490
KWE1 DIA 5.60 SQ 4.50	K11129123193	490

Ordering Example :-KWE1 DIA 0.141" SQ 0.110" = 2 Nos.

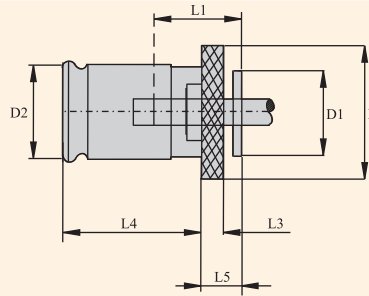
TAP ADAPTOR (WITHOUT SAFETY CLUTCH) TYPE - KWE



Item Name	Item Code	Price INR
KWE1 DIA 6.00 SQ 4.50	K11129165193	490
KWE1 DIA 6.00 SQ 4.90	K11129146193	490
KWE1 DIA 6.10 SQ 5.00	K11129166193	490
KWE1 DIA 6.20 SQ 5.00	K11129167193	490
KWE1 DIA 6.30 SQ 5.00	K11129124193	490
KWE1 DIA 7.00 SQ 5.50	K11129147193	490
KWE1 DIA 7.10 SQ 5.60	K11129125193	490
KWE1 DIA 8.00 SQ 6.00	K11129168193	490
KWE1 DIA 8.00 SQ 6.20	K11129148193	490
KWE1 DIA 8.00 SQ 6.30	K11129126193	490
KWE1 DIA 8.50 SQ 6.50	K11129170193	490
KWE1 DIA 9.00 SQ 7.00	K11129149193	490
KWE1 DIA 9.00 SQ 7.10	K11129127193	490
KWE1 DIA 9.50 SQ 7.00	K11129171193	490

Ordering Example :-KWE1 DIA 6.00 SQ 4.50 = 2 Nos.

KWE 2



Item Name	For Taps		Suitable for Chuck Size	D dia.	D1 dia.	D2 dia.	I1	I3	I4	I5	approx. Weight kgs.
	Thread dia.	Shank dia.									
KWE 2	M8 - M20	7.18	2	48	30	31	30	5	35	11	0.250

Item Name	Item Code	Price INR
KWE2 DIA 0.141" SQ 0.110"	K11130191193	830
KWE2 DIA 0.168" SQ 0.131"	K11130192193	830
KWE2 DIA 0.194" SQ 0.152"	K11130198193	830
KWE2 DIA 0.220" SQ 0.165"	K11130199193	830
KWE2 DIA 0.255" SQ 0.191"	K11130200193	830
KWE2 DIA 0.313" SQ 0.234"	K11130201193	830
KWE2 DIA 0.318" SQ 0.238"	K11130202193	830
KWE2 DIA 0.323" SQ 0.242"	K11130193193	830
KWE2 DIA 0.367" SQ 0.275"	K11130194193	830
KWE2 DIA 0.381" SQ 0.286"	K11130195193	830
KWE2 DIA 0.429" SQ 0.322"	K11130196193	830
KWE2 DIA 0.437" SQ 0.328	K11130197193	830
KWE2 DIA 0.480" SQ 0.360"	K11130203193	830
KWE2 DIA 0.542" SQ 0.406"	K11130204193	830
KWE2 DIA 0.562" SQ 0.421"	K11130205193	830

Ordering Example :-KWE2 DIA 0.141" SQ 0.110" = 2 Nos.

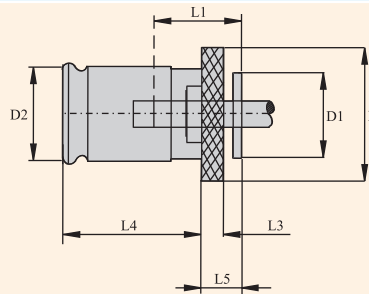


TAP ADAPTOR (WITHOUT SAFETY CLUTCH) TYPE - KWE

Item Name	Item Code	Price INR
KWE2 DIA 0.590" SQ 0.442"	K11130206193	830
KWE2 DIA 0.652" SQ 0.489"	K11130207193	830
KWE2 DIA 0.687" SQ 0.515"	K11130208193	830
KWE2 DIA 0.697" SQ 0.523"	K11130209193	830
KWE2 DIA 0.700" SQ 0.531"	K11130210193	830
KWE2 DIA 10.00 SQ 8.00	K11130128193	830
KWE2 DIA 10.50 SQ 8.00	K11130172193	830
KWE2 DIA 11.00 SQ 9.00	K11130150193	830
KWE2 DIA 11.20 SQ 9.00	K11130129193	830
KWE2 DIA 12.00 SQ 9.00	K11130151193	830
KWE2 DIA 12.50 SQ 10.00	K11130130193	830
KWE2 DIA 13.00 SQ 10.00	K11130173193	830
KWE2 DIA 14.00 SQ 11.00	K11130152193	830
KWE2 DIA 14.00 SQ 11.20	K11130131193	830
KWE2 DIA 15.00 SQ 12.00	K11130174193	830
KWE2 DIA 16.00 SQ 12.00	K11130153193	830
KWE2 DIA 16.00 SQ 12.50	K11130132193	830
KWE2 DIA 17.00 SQ 13.00	K11130175193	830
KWE2 DIA 18.00 SQ 14.00	K11130133193	830
KWE2 DIA 18.00 SQ 14.50	K11130154193	830
KWE2 DIA 19.00 SQ 15.00	K11130176193	830
KWE2 DIA 20.00 SQ 15.00	K11130177193	830
KWE2 DIA 20.00 SQ 16.00	K11130134193	830
KWE2 DIA 6.00 SQ 4.50	K11130165193	830

Ordering Example :-KWE2 DIA 0.590" SQ 0.442" = 2 Nos.

KWE 3



Item Name	For Taps		Suitable for Chuck Size	D dia.	D1 dia.	D2 dia.	I1	I3	I4	I5	approx. Weight kgs.
	Thread dia.	Shank dia.									
KWE 3	M14 - M33	11-28	3	70	48	48	44	6	55.5	14	0.800

TAP ADAPTOR (WITHOUT SAFETY CLUTCH) TYPE - KWE



KWE 3

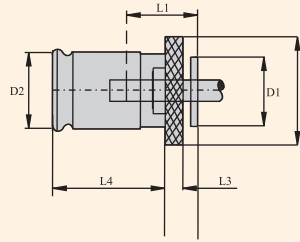
Item Name	Item Code	Price INR
KWE3 DIA 0.590" SQ 0.442"	K11169206193	1330
KWE3 DIA 0.652" SQ 0.489"	K11169207193	1330
KWE3 DIA 0.687" SQ 0.515"	K11169208193	1330
KWE3 DIA 0.697" SQ 0.523"	K11169209193	1330
KWE3 DIA 0.700" SQ 0.531"	K11169210193	1330
KWE3 DIA 0.760" SQ 0.570"	K11169211193	1330
KWE3 DIA 0.800" SQ 0.600"	K11169212193	1330
KWE3 DIA 0.896" SQ 0.672"	K11169213193	1330
KWE3 DIA 0.906" SQ 0.679"	K11169214193	1330
KWE3 DIA 1.021" SQ 0.766"	K11169215193	1330
KWE3 DIA 1.108" SQ 0.831"	K11169216193	1330
KWE3 DIA 1.125" SQ 0.843"	K11169217193	1330
KWE3 DIA 1.233" SQ 0.925"	K11169218193	1330
KWE3 DIA 1.312" SQ 0.984"	K11169219193	1330
KWE3 DIA 11.00 SQ 9.00	K11169150193	1330
KWE3 DIA 11.20 SQ 9.00	K11169129193	1330
KWE3 DIA 12.00 SQ 9.00	K11169151193	1330
KWE3 DIA 12.50 SQ 10.00	K11169130193	1330
KWE3 DIA 13.00 SQ 10.00	K11169173193	1330
KWE3 DIA 14.00 SQ 11.00	K11169152193	1330
KWE3 DIA 14.00 SQ 11.20	K11169131193	1330
KWE3 DIA 15.00 SQ 12.00	K11169174193	1330
KWE3 DIA 16.00 SQ 12.00	K11169153193	1330
KWE3 DIA 16.00 SQ 12.50	K11169132193	1330
KWE3 DIA 17.00 SQ 13.00	K11169175193	1330
KWE3 DIA 18.00 SQ 14.00	K11169133193	1330
KWE3 DIA 18.00 SQ 14.50	K11169154193	1330
KWE3 DIA 19.00 SQ 15.00	K11169176193	1330
KWE3 DIA 20.00 SQ 15.00	K11169177193	1330
KWE3 DIA 20.00 SQ 16.00	K11169134193	1330
KWE3 DIA 21.00 SQ 17.00	K11169178193	1330
KWE3 DIA 22.00 SQ 17.00	K11169179193	1330
KWE3 DIA 22.00 SQ 18.00	K11169155193	1330
KWE3 DIA 22.40 SQ 18.00	K11169135193	1330
KWE3 DIA 23.00 SQ 17.00	K11169180193	1330
KWE3 DIA 24.00 SQ 19.00	K11169181193	1330
KWE3 DIA 25.00 SQ 20.00	K11169136193	1330
KWE3 DIA 26.00 SQ 21.00	K11169182193	1330
KWE3 DIA 28.00 SQ 22.00	K11169156193	1330
KWE3 DIA 28.00 SQ 22.40	K11169137193	1330
KWE3 DIA 30.00 SQ 23.00	K11169183193	1330
KWE3 DIA 31.50 SQ 25.00	K11169138193	1330
KWE3 DIA 32.00 SQ 24.00	K11169157193	1330
KWE3 DIA 32.00 SQ 26.00	K11169184193	1330
KWE3 DIA 35.00 SQ 26.00	K11169185193	1330
KWE3 DIA 36.00 SQ 29.00	K11169158193	1330

Ordering Example :-KWE3 DIA 0.590" SQ 0.442" = 2 Nos.



TAP ADAPTOR (WITHOUT SAFETY CLUTCH) TYPE - KWE

KWE 4



Item Name	For Taps		Suitable for Chuck Size	D dia.	D1 dia.	D2 dia.	l1	l3	l3	l4	approx. Weight kgs.
	Thread dia.	Shank dia.									
KWE 4	M22 - M48	18-36	4	92	60	60	71	13	63	42	1.500

Item Name	Item Code	Price INR
KWE4 DIA 0.800" SQ 0.600"	K11131212193	3100
KWE4 DIA 0.896" SQ 0.672"	K11131213193	3100
KWE4 DIA 0.906" SQ 0.679"	K11131214193	3100
KWE4 DIA 1.021" SQ 0.766"	K11131215193	3100
KWE4 DIA 1.108" SQ 0.831"	K11131216193	3100
KWE4 DIA 1.125" SQ 0.843"	K11131217193	3100
KWE4 DIA 1.233" SQ 0.925"	K11131218193	3100
KWE4 DIA 1.312" SQ 0.984"	K11131219193	3100
KWE4 DIA 1.430" SQ 1.072"	K11131221193	3100
KWE4 DIA 1.500" SQ 1.125"	K11131222193	3100
KWE4 DIA 16.00 SQ 12.50	K11131132193	3100
KWE4 DIA 17.00 SQ 13.00	K11131175193	3100
KWE4 DIA 18.00 SQ 14.00	K11131133193	3100
KWE4 DIA 18.00 SQ 14.50	K11131154193	3100
KWE4 DIA 19.00 SQ 15.00	K11131176193	3100
KWE4 DIA 20.00 SQ 15.00	K11131177193	3100
KWE4 DIA 20.00 SQ 16.00	K11131134193	3100
KWE4 DIA 21.00 SQ 17.00	K11131178193	3100
KWE4 DIA 22.00 SQ 17.00	K11131179193	3100
KWE4 DIA 22.00 SQ 18.00	K11131155193	3100
KWE4 DIA 22.40 SQ 18.00	K11131135193	3100
KWE4 DIA 23.00 SQ 17.00	K11131180193	3100
KWE4 DIA 24.00 SQ 19.00	K11131181193	3100
KWE4 DIA 25.00 SQ 19.00	K11131186193	3100
KWE4 DIA 25.00 SQ 20.00	K11131136193	3100
KWE4 DIA 26.00 SQ 21.00	K11131182193	3100
KWE4 DIA 28.00 SQ 21.00	K11131187193	3100
KWE4 DIA 28.00 SQ 22.00	K11131156193	3100
KWE4 DIA 28.00 SQ 22.40	K11131137193	3100
KWE4 DIA 30.00 SQ 23.00	K11131183193	3100
KWE4 DIA 31.50 SQ 25.00	K11131138193	3100
KWE4 DIA 32.00 SQ 24.00	K11131157193	3100
KWE4 DIA 32.00 SQ 26.00	K11131184193	3100
KWE4 DIA 35.00 SQ 26.00	K11131185193	3100

Ordering Example :-KWE4 DIA 0.800" SQ 0.600" = 2 Nos.

TAP ADAPTOR (WITHOUT SAFETY CLUTCH) TYPE - KWE

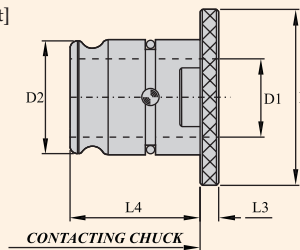


Item Name	Item Code	Price INR
KWE4 DIA 35.50 SQ 28.00	K11131139193	3100
KWE4 DIA 36.00 SQ 29.00	K11131158193	3100
KWE4 DIA 38.00 SQ 29.00	K11169184193	3100
KWE4 DIA 40.00 SQ 31.50	K11169185193	3100
KWE4 DIA 40.00 SQ 32.00	K11169158193	3100
KWE4 DIA 42.00 SQ 32.00	K11169158193	3100
KWE4 DIA 44.00 SQ 35.00	K11169158193	3100
KWE4 DIA 45.00 SQ 35.00	K11169158193	3100

Ordering Example :-KWE4 DIA 35.50 SQ 28.00 = 2 Nos.

QUICK CHANGE TAPPING CHUCK TYPE KWRE[REDUCTION SOCKET]

Quick Change Tapping Chuck Type KWRE[Reduction Socket]



Ordering Example : REDUCER : KWRE 2/1/ = 2Nos.

Item Name	Item Code	Suitable For Chuck Size	Adaptors Size	D dia.	D1 dia.	D2 dia.	L3	L4	Price INR
KWRE1/0	K11219254193	2	1	48	19	31	5	35.0	1510
KWRE2/1	K11219249193	2	1	48	19	31	5	35.0	755
KWRE3/1	K11219250193	3	1	70	19	48	6	55.5	1510
KWRE3/2	K11219251193	3	2	70	31	48	6	55.5	1510
KWRE4/2	K11219252193	4	2	92	31	60	13	60.0	4320
KWRE4/3	K11219253193	4	3	92	48	60	13	60.0	4320

Ordering Example :-KWRE 1/0 = 2 Nos.



TECHNICAL INFORMATION

Tap Shank Dimensions ISO 529 - 1975

Dimension Dia. x Square	Metric		UNC		UNF		BSW		BSF		BA	
		Shank dia. enlarged		Shank dia. enlarged		Shank dia. enlarged		Shank dia. enlarged		Shank dia. enlarged		Shank dia. enlarged
3.15 x 2.5	M4	M3	-	No. 4-40	-	No. 4-48	-	-	-	-	-	No. 5
3.55 x 2.8	M4.5	M3.5	No. 8-32	No. 5-40	No. 8-36	No. 5-44	-	-	-	-	-	No. 3
4 x 3.15	M5	M4	No. 10-24	No. 6-32	No. 10-32	No. 6-40	3/16"-24	-	3/16"-32	-	-	No. 4
4.5 x 3.55	M6	-	1/4"-20	No. 8-32	1/4"-28	No. 3-36	1/4"-20	-	7/32"-28	-	-	No. 1
5 x 4	-	M5	-	No. 10-24	-	No. 10-32	-	1/4"-20	-	1/4"-26	-	No. 0
5.6 x 4.5	-	-	-	No. 10-24	-	No. 10-32	-	3/16"-24	-	-	3/16"-32	No. 2
6.3 x 5	M8	M6	5/16"-18	1/4"-20	5/16"-24	1/4"-28	5/16"-18	1/4"-20	9/32"-26	7/32"-28	-	No. 1
7.1 x 5.6	-	-	3/8"-16	-	3/8"-24	-	3/8"-16	-	5/16"-22	1/4"-26	-	No. 0
8 x 6.3	M10	M8	7/16"-14	5/16"-18	7/16"-20	-	7/16"-14	5/16"-18	7/16"-18	9/32"-36	-	-
9 x 7.1	M12	-	1/2"-13	-	1/2"-20	-	1/2"-12	-	7/16"-18	5/16"-22	-	-
10 x 8	-	M10	-	3/8"-16	-	3/8"-24	-	1/2"-12	-	1/2"-12	-	-
11.2 x 9	M14	-	9/16"-12	-	9/16"-18	-	9/16"-12	-	3/8"-16	-	3/8"-20	-
12.5 x 10	M16	-	5/8"-11	-	5/8"-18	-	5/8"-11	-	9/16"-16	-	-	-
14 x 11.2	M18	-	3/4"-10	-	3/4"-16	-	11/16"-11	-	3/8"-14	-	-	-
16 x 12.5	M20	-	-	-	-	-	3/4"-10	-	11/16"-14	-	-	-
18 x 14	M22	-	7/8"-9	-	7/8"-14	-	7/8"-9	-	3/4"-12	-	-	-
20 x 16	M24	-	1"-8	-	1"-12	-	1"-8	-	7/8"-11	-	-	-
22.4 x 18	M27	-	1 1/8"-7	-	1 1/8"-12	-	1 1/8"-7	-	1"-10	-	-	-
25 X 20	M30	-	-	-	-	-	-	-	1 1/8"-9	-	-	-
28 x 22.4	M33	-	1 1/4"-4	-	1 1/4"-12	-	1 1/4"-7	-	-	-	-	-
31.5 x 25	M36	-	1 3/8"-6	-	1 3/8"-12	-	-	-	1 1/4"-9	-	-	-
	M39	-	1 1/2"-6	-	1 1/2"-12	-	1 1/2"-6	-	13/8"-8	-	-	-
	M42	-	-	-	-	-	-	-	1 1/2"-8	-	-	-
	M45	-	1 3/4"-5	-	-	-	1 3/4"-5	-	15/8"-8	-	-	-
	M48	-	-	-	-	-	-	-	1 3/4"-7	-	-	-

Tap Shank Dimensions DIN

Dimension Dia. x Square	DIN 352	DIN 353	DIN 371	DIN 374	DIN 376	DIN 2182	DIN 2183
3.5 x 2.7	M3	-	M3	M5	M5	1/8"	-
4 x 3	M4	-	M3.5	-	-	-	-
4.5 x 3.4	M4	-	M4	M6	M6	5/32"	1/4"
6 x 4.9	M5	-	M5	-	-	7/32"	-
	M6	-	M6	-	-	-	-
	M8	-	-	M8	M8	-	-
7 x 5.5	M10	G 1/8"	-	M10	M10	1/4"	3/8"
8 x 6.2	-	-	M8	-	-	5/16"	7/16"
9 x 7	M12	-	-	M12	M12	3/8"	1/2"
10 x 8	-	-	M10	-	-	-	-
11 x 9	M14	G 1/4"	-	M14	M14	-	9/16"
12 X 9	M16	G 3/8"	-	M16	M16	-	5/8"
14 X 11	M18	-	-	M18	M18	-	11/16"
16 X 12	M20	G 1/2"	-	M20	M20	-	13/16"
18 x 14.5	M22	G 5/8:	-	M22	M22	-	7/8"
	M24	-	-	M24	M24	-	15/16"
20 x 16	M27	G 3/4"	-	M27	M27	-	1"
22 x 18	M30	G 7/8"	-	M30	M30	-	1 1/8"
25 x 20	M33	G 1"	-	M33	M33	-	1 1/4"
28 x 22	M36	G 1 1/8"	-	M36	M36	-	1 3/8"
32 x 24	M39	G 1 1/8"	-	M39	M39	-	1 1/2"
	M42	-	-	M42	M42	-	15/8"
	M45	G 3/8"	-	M45	M45	-	13/4"
36 x 29	M48	G 1 1/2"	-	M48	M48	-	17/8"
	-	G 1 3/4"	-	-	-	-	-
	-	G 2"	-	-	-	-	-

Tap Shank Dimensions ANSI (US Standards)

Tap Shank Dimensions (JIS Standards)

Dimension in Inch. Dia. x Square	Metric Conversions		Tap Size	Dimension in Inch. Dia. x Square	Metric Conversions		Tap Size	Dimension in mm. Dia. x Square		Tap Size
0.141	0.110	3.59	2.80	1/8" No.6	0.590	0.442	14.99	11.23	3/4"	M 3 & M 3.5
0.168	0.131	4.27	3.33	5/32" No.8	0.652	0.489	16.57	12.43	M 20	M 4 & M 4.5
0.194	0.152	4.93	3.87	3/16" No. 10	0.688	0.515	17.47	13.09	1/2" Ps	M 5
0.220	0.165	5.59	4.20	No. 12	0.697	0.523	17.71	13.29	7/8"	M 6
0.255	0.191	6.48	4.86	1/4" No. 14	0.700	0.531	17.78	13.49	3/8"Ps	M 7 & M 8
0.312	0.234	7.94	5.95	1/16"Ps 1/8"Ps	0.760	0.570	19.31	14.48	M 24	M 9 & M 10
0.318	0.238	8.08	6.05	5/16" 3/8"	0.800	0.600	20.32	15.24	1"	M 11
0.323	0.242	8.21	6.15	5/16" 7/16"	0.896	0.672	22.76	17.07	11/8"	M 12
0.367	0.275	9.33	6.99	1/2"	0.906	0.679	23.02	17.25	3/4"P	M 14
0.381	0.286	9.68	7.27	3/8"	1.021	0.766	25.94	19.46	1 1/4"	M 16
0.429	0.322	10.90	8.18	9/16"	1.108	0.833	28.15	21.11	13/8"	M 18
0.438	0.328	11.12	8.34	1/8"Ps	1.125	0.843	28.58	21.42	1"P	M 20
0.480	0.360	12.20	9.15	5/8"	1.233	0.925	31.32	23.50	1 1/2"	M 22
0.542	0.406	13.77	10.31	11/16"	1.132	0.984	33.34	25.00	1 1/4"P	M 24
0.563	0.421	14.29	10.70	1/4"Ps	1.430	1.072	36.33	27.23	13/4"	M 27
										M 30



Recommended Torque Values For Safety Clutch adjustment For Tapping & Cold Forming (Rolling)

For material upto 1000 N/mm²

Torque Setting Nm	Threads										Torque Setting Nm
	Metric	Whitworth BSW	BSP Whitworth Pipe	BSF	BSP Taper	BA	PG	NPT Taper	UNC	UNF	
0.5	M3	-	-	-	-	No. 7	-	-	-	-	0.5
0.6	-	-	-	-	-	No. 6	-	-	No. 3	No. 4	0.6
0.8	M 3.5	-	-	-	-	No. 5	-	-	No. 4	No. 5	0.8
1.0	-	1/8"	-	-	-	-	-	-	No. 5	-	1.0
1.2	-	-	-	-	-	No. 4	-	-	-	No. 6	1.2
1.6	M4	-	-	-	-	-	-	-	No. 6	No. 8	1.6
2.0	-	5/32"	-	-	-	No. 3	-	-	No. 8	-	2.0
2.5	M5	-	-	3/16"	-	No. 2	-	-	-	No. 10	2.5
3.0	-	-	-	-	-	-	-	-	-	No. 12	3.0
4.0	-	3/16"	-	7/32"	-	No. 1	-	-	No. 10	1/4"	4.0
5.0	M6	7/32"	-	1/4"	-	No. 0	-	-	No. 12	-	5.0
6.0	-	-	G 1/8"	9/32"	-	-	-	-	-	5/16"	6.0
8.0	-	1/4"	-	5/16"	-	-	-	-	1/4"	3/8"	8.0
10	M8	-	-	-	-	-	-	-	-	-	10
12	-	5/16"	-	3/8"	-	-	PG 7	-	5/16"	7/16"	12
16	-	-	-	-	-	-	-	-	-	1/2"	16
18	M10	3/8"	G 1/4"	7/16"	1/8"	-	-	-	3/8"	-	18
20	-	-	-	-	-	-	PG9	1/8"	-	-	20
22	-	-	-	-	-	-	PG11	-	-	9/16"	22
25	-	-	-	1/2"	-	-	PG 13.5	-	-	5/8"	25
28	M 12	7/16"	G 3/8"	-	-	-	PG 16	-	7/16"	-	28
32	-	-	-	9/16"	-	-	-	-	-	-	32
36	-	-	-	-	-	-	-	-	-	3/4"	36
40	-	-	-	5/8"	-	-	-	-	1/2"	-	40
45	M 14	1/2"	-	11/16"	-	-	PG 21	-	-	-	45
50	M 16	-	G 1/2"	-	1/4"	-	-	-	9/16"	-	50
56	-	-	G 5/8"	-	-	-	-	1/4"	-	7/8"	56
63	-	5/8"	-	-	3/8"	-	PG 29	-	5/8"	-	63
70	-	-	G 3/4"	3/4"	-0	-	-	3/8"	-	-	70
80	M 18	-	G 7/8"	13/16"	-	-	PG 36	-	-	-	80
90	M 20	3/4"	-	7/8"	-	-	PG 42	-	3/4"	1"	90
100	M22	-	-	-	-	-	PG 48	-	-	1 1/8"	100
110	-	-	-	-	-	-	-	-	-	1/4"	110
125	-	7/8"	-	1"	-	-	-	-	7/8"	1 3/8"	125
140	-	-	G 1"	-	-	-	-	-	-	1 1/2"	140
160	M24	-	G 1 1/8"	-	1/2"	-	-	1/2"	-	-	160
180	M 27	-	G 1 1/4"	1 1/8"	-	-	-	-	-	-	180
200	-	1"	G 1 3/8"	1 1/4"	3/4"	-	-	3/4"	1"	-	200
220	-	-	G 1 1/2"	-	-	-	-	-	-	-	220
240	-	-	G 1 3/4"	-	-	-	-	-	-	-	240
260	-	-	G 2"	1 3/8"	-	-	-	-	-	-	260
280	M 30	1 1/8"	-	-	-	-	-	-	1 1/8"	-	280
300	-	-	G 2 1/4"	1 1/2"	-	-	-	-	-	-	300
320	M 33	1 1/4"	-	1 5/8"	-	-	-	-	1 1/4"	-	320
340	-	-	G 2 1/4"	-	1"	-	-	1"	-	-	340
360	-	-	G 2 3/4"	-	-	-	-	-	-	-	360
400	-	-	G 3"	-	-	-	-	-	-	-	400
420	M 36	-	G 3 1/4"	-	-	-	-	-	-	-	420
450	-	-	G 3 1/2"	1 3/4"	1 1/4"	-	-	1 1/4"	-	-	450
480	M 39	1 3/8"	G 3 3/4"	-	-	-	-	-	1 3/8"	-	480
500	-	1 1/2"	G 4"	2"	-	-	-	-	1 1/2"	-	500
560	-	-	-	-	1 1/2"	-	-	1 1/2"	-	-	560
630	M 42	-	-	-	-	-	-	-	-	-	630
710	M 45	-	-	2 1/4"	2"	-	-	2"	-	-	710
800	-	1 5/8"	-	2 1/2"	-	-	-	-	-	-	800
900	M 48	1 3/4"	-	2 3/4"	-	-	-	-	1 3/4"	-	900

The given torque values are for tapping & cold forming operations. They pertain to material with a tensile strength of 1000 N/mm². The torque values for tapping include a wear factor of 100%.

If necessary, these values can be increased by up to 20% for tapping & up to 50% for cold forming.



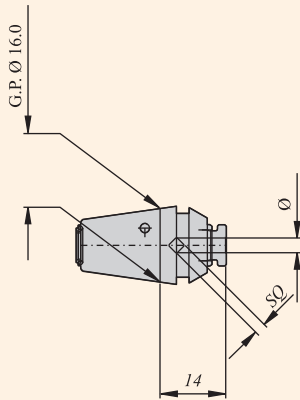
QUICK CHANGE TAPPING COLLETS WITH AXIAL COMPENSATION (ERT)

This system is to be used along with ER Collet chucks on CNC machines & SPM's Recommendations

Rapid approach, then feed the tap with approximately 95% of the pitch value, this gives positive start to the tapping. This uses 20% to 30% of the compensation stroke.

When the spindle rotation & the feed movement are simultaneously reversed. Return feed must be made 100% of the pitch value. Which maintains the sleeve of the tapping collet in the expansion stroke upto the tap disengagement. When tapping with very high speed, an appropriate programming, compensation may be necessary to balance the differences of inertia between the spindle & the feed movement on reverse. Never disturb the axial compensation. Use external coolant supply only.

ERT 16 COLLET



FOR ERT 16 COLLET CHUCKS

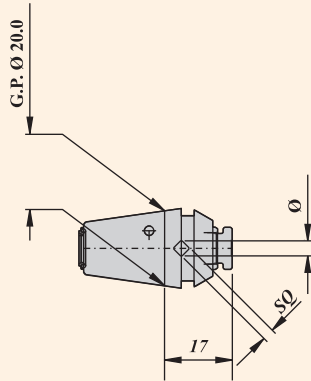
HOLDING RANGE
FROM Ø 2.8 X □ 1.8 mm
TO Ø 5.0 X □ 4.0 mm

ONLY EXPANSION 7 mm

Item Name	Item Code	Price INR
ERT16 DIA 0.141" SQ 0.110"	K11170191193	1945
ERT16 DIA 0.168" SQ 0.131"	K11170192193	1945
ERT16 DIA 0.194" SQ 0.152"	K11170198193	1945
ERT16 DIA 2.50 SQ 2.10	K11170141193	1945
ERT16 DIA 2.80 SQ 2.10	K11170142193	1945
ERT16 DIA 3.15 SQ 2.50	K11170118193	1945
ERT16 DIA 3.50 SQ 2.70	K11170143193	1945
ERT16 DIA 3.55 SQ 2.80	K11170119193	1945
ERT16 DIA 4.00 SQ 3.00	K11170144193	1945
ERT16 DIA 4.00 SQ 3.15	K11170120193	1945
ERT16 DIA 4.00 SQ 3.20	K11170163193	1945
ERT16 DIA 4.50 SQ 3.40	K11170145193	1945
ERT16 DIA 4.50 SQ 3.55	K11170121193	1945
ERT16 DIA 5.00 SQ 4.00	K11170122193	1945

Ordering Example :-ERT16 DIA 0.141" SQ 0.110" = 2 Nos.

ERT 20 COLLET



FOR ERT 20 COLLET CHUCKS

HOLDING RANGE
FROM Ø 2.8 X □ 1.8 mm
TO Ø 7.1 X □ 5.6 mm

ONLY EXPANSION 7.5 mm

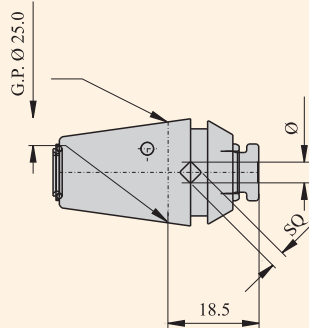
Item Name	Item Code	Price INR
ERT20 DIA 0.141" SQ 0.110"	K11171191193	2220
ERT20 DIA 0.168" SQ 0.131"	K11171192193	2220
ERT20 DIA 0.194" SQ 0.152"	K11171198193	2220
ERT20 DIA 0.220" SQ 0.165"	K11171199193	2220
ERT20 DIA 0.255" SQ 0.191"	K11171200193	2220
ERT20 DIA 2.80 SQ 1.80	K11171227193	2220
ERT20 DIA 3.15 SQ 2.50	K11171118193	2220
ERT20 DIA 3.50 SQ 2.70	K11171143193	2220
ERT20 DIA 3.55 SQ 2.80	K11171119193	2220
ERT20 DIA 4.00 SQ 3.00	K11171144193	2220
ERT20 DIA 4.00 SQ 3.15	K11171120193	2220
ERT20 DIA 4.50 SQ 3.40	K11171145193	2220
ERT20 DIA 4.50 SQ 3.55	K11171121193	2220
ERT20 DIA 5.00 SQ 4.00	K11171122193	2220
ERT20 DIA 5.50 SQ 4.50	K11171164193	2220
ERT20 DIA 5.60 SQ 4.50	K11171123193	2220
ERT20 DIA 6.00 SQ 4.50	K11171165193	2220
ERT20 DIA 6.00 SQ 4.90	K11171146193	2220
ERT20 DIA 6.10 SQ 5.00	K11171166193	2220
ERT20 DIA 6.20 SQ 5.00	K11171167193	2220
ERT20 DIA 6.30 SQ 5.00	K11171124193	2220
ERT20 DIA 7.00 SQ 5.50	K11171147193	2220
ERT20 DIA 7.10 SQ 5.60	K11171125193	2220

Ordering Example :-ERT20 DIA 0.141" SQ 0.110" = 2 Nos.



QUICK CHANGE TAPPING COLLETS WITH AXIAL COMPENSATION (ERT)

ERT 25 COLLET



FOR ERT 25 COLLET CHUCKS

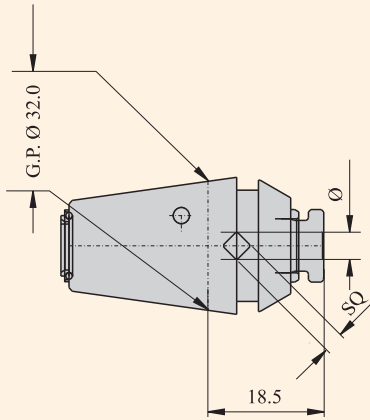
HOLDING RANGE
FROM Ø 2.8 X □ 1.8 mm
TO Ø 9.0 X □ 7.3 mm

ONLY EXPANSION 8 mm

Item Name	Item Code	Price INR
ERT25 DIA 0.141" SQ 0.110"	K11172191193	2220
ERT25 DIA 0.168" SQ 0.131"	K11172192193	2220
ERT25 DIA 0.194" SQ 0.152"	K11172198193	2220
ERT25 DIA 0.220" SQ 0.165"	K11172199193	2220
ERT25 DIA 0.255" SQ 0.191"	K11172200193	2220
ERT25 DIA 0.312" SQ 0.234"	K11172225193	2220
ERT25 DIA 0.318" SQ 0.238"	K11172202193	2220
ERT25 DIA 0.323" SQ 0.242"	K11172193193	2220
ERT25 DIA 0.367" SQ 0.275"	K11172194193	2220
ERT25 DIA 2.50 SQ 2.10	K11172141193	2220
ERT25 DIA 2.80 SQ 2.10	K11172142193	2220
ERT25 DIA 3.15 SQ 2.50	K11172118193	2220
ERT25 DIA 3.50 SQ 2.70	K11172143193	2220
ERT25 DIA 3.55 SQ 2.80	K11172119193	2220
ERT25 DIA 4.00 SQ 3.00	K11172144193	2220
ERT25 DIA 4.00 SQ 3.15	K11172120193	2220
ERT25 DIA 4.00 SQ 3.20	K11172163193	2220
ERT25 DIA 4.50 SQ 3.40	K11172145193	2220
ERT25 DIA 4.50 SQ 3.55	K11172121193	2220
ERT25 DIA 5.00 SQ 4.00	K11172122193	2220
ERT25 DIA 5.50 SQ 4.50	K11172164193	2220
ERT25 DIA 5.60 SQ 4.50	K11172123193	2220
ERT25 DIA 6.00 SQ 4.50	K11172165193	2220
ERT25 DIA 6.00 SQ 4.90	K11172146193	2220
ERT25 DIA 6.10 SQ 5.00	K11172166193	2220
ERT25 DIA 6.20 SQ 5.00	K11172167193	2220
ERT25 DIA 6.30 SQ 5.00	K11172124193	2220
ERT25 DIA 7.00 SQ 5.50	K11172147193	2220
ERT25 DIA 8.00 SQ 5.00	K11172229193	2220
ERT25 DIA 8.00 SQ 6.20	K11172148193	2220
ERT25 DIA 8.00 SQ 6.30	K11172126193	2220
ERT25 DIA 8.50 SQ 6.50	K11172170193	2220
ERT25 DIA 9.00 SQ 7.00	K11172149193	2220
ERT25 DIA 9.00 SQ 7.10	K11172127193	2220

Ordering Example :-ERT25 DIA 0.141" SQ 0.110" = 2 Nos.

ERT 32 COLLET



FOR ERT 32 COLLET CHUCKS

HOLDING RANGE
FROM Ø 2.8 X □ 1.8 mm
TO Ø 12.0 X □ 9.0 mm

ONLY EXPANSION 10 mm

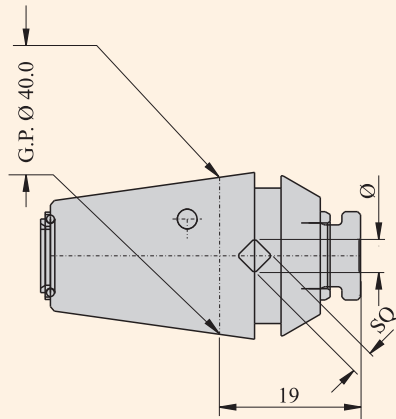
Item Name	Item Code	Price INR
ERT32 DIA 0.141" SQ 0.110"	K11173191193	2495
ERT32 DIA 0.168" SQ 0.131"	K11173192193	2495
ERT32 DIA 0.194" SQ 0.152"	K11173198193	2495
ERT32 DIA 0.220" SQ 0.165"	K11173199193	2495
ERT32 DIA 0.255" SQ 0.191"	K11173200193	2495
ERT32 DIA 0.312" SQ 0.234"	K11173225193	2495
ERT32 DIA 0.318" SQ 0.238"	K11173202193	2495
ERT32 DIA 0.323" SQ 0.242"	K11173193193	2495
ERT32 DIA 0.367" SQ 0.275"	K11173194193	2495
ERT32 DIA 0.381" SQ 0.286"	K11173195193	2495
ERT32 DIA 0.429" SQ 0.322"	K11173196193	2495
ERT32 DIA 0.437" SQ 0.328	K11173197193	2495
ERT32 DIA 2.50 SQ 2.10	K11173141193	2495
ERT32 DIA 2.80 SQ 2.10	K11173142193	2495
ERT32 DIA 3.15 SQ 2.50	K11173142193	2495
ERT32 DIA 3.50 SQ 2.70	K11173118193	2495
ERT32 DIA 3.55 SQ 2.80	K11173143193	2495
ERT32 DIA 4.00 SQ 3.00	K11173119193	2495
ERT32 DIA 4.00 SQ 3.15	K11173144193	2495
ERT32 DIA 4.00 SQ 3.20	K11173120193	2495
ERT32 DIA 4.50 SQ 3.40	K11173163193	2495
ERT32 DIA 4.50 SQ 3.55	K11173145193	2495
ERT32 DIA 5.00 SQ 4.00	K11173121193	2495
ERT32 DIA 5.50 SQ 4.50	K11173122193	2495
ERT32 DIA 5.50 SQ 4.50	K11173164193	2495
ERT32 DIA 5.60 SQ 4.50	K11173123193	2495
ERT32 DIA 6.00 SQ 4.50	K11173165193	2495
ERT32 DIA 6.00 SQ 4.90	K11173146193	2495
ERT32 DIA 6.10 SQ 5.00	K11173166193	2495
ERT32 DIA 6.20 SQ 5.00	K11173167193	2495
ERT32 DIA 6.30 SQ 5.00	K11173124193	2495



QUICK CHANGE TAPPING COLLETS WITH AXIAL COMPENSATION (ERT)

Item Name	Item Code	Price INR
ERT32 DIA 7.00 SQ 5.50	K11173147193	2495
ERT32 DIA 7.10 SQ 5.60	K11173125193	2495
ERT32 DIA 8.00 SQ 6.00	K11173168193	2495
ERT32 DIA 8.00 SQ 6.20	K11173148193	2495
ERT32 DIA 8.00 SQ 6.30	K11173126193	2495
ERT32 DIA 8.50 SQ 6.50	K11173170193	2495
ERT32 DIA 9.00 SQ 7.00	K11173149193	2495
ERT32 DIA 9.00 SQ 7.10	K11173127193	2495
ERT32 DIA 10.00 SQ 8.00	K11173128193	2495
ERT32 DIA 10.50 SQ 8.00	K11173172193	2495
ERT32 DIA 11.00 SQ 9.00	K11173150193	2495
ERT32 DIA 11.20 SQ 9.00	K11173129193	2495
ERT32 DIA 12.00 SQ 9.00	K11173151193	2495

ERT 40 COLLET



FOR ERT 40 COLLET CHUCKS

HOLDING RANGE
FROM Ø 2.8 X □ 1.8 mm
TO Ø 16.0 X □ 12.5 mm

ONLY EXPANSION 12 mm

Item Name	Item Code	Price INR
ERT40 DIA 0.141" SQ 0.110"	K11174191193	3145
ERT40 DIA 0.168" SQ 0.131"	K11174192193	3145
ERT40 DIA 0.194" SQ 0.152"	K11174198193	3145
ERT40 DIA 0.220" SQ 0.165"	K11174199193	3145
ERT40 DIA 0.255" SQ 0.191"	K11174200193	3145
ERT40 DIA 0.312" SQ 0.234"	K11174225193	3145
ERT40 DIA 0.318" SQ 0.238"	K11174202193	3145
ERT40 DIA 0.323" SQ 0.242"	K11174193193	3145
ERT40 DIA 0.367" SQ 0.275"	K11174194193	3145
ERT40 DIA 0.381" SQ 0.286"	K11174195193	3145
ERT40 DIA 0.429" SQ 0.322"	K11174196193	3145
ERT40 DIA 0.437" SQ 0.328"	K11174197193	3145
ERT40 DIA 0.480" SQ 0.360"	K11174203193	3145

Ordering Example :-ERT40 DIA 0.141" SQ 0.110" = 2 Nos.

QUICK CHANGE TAPPING COLLETS WITH AXIAL COMPENSATION (ERT)



Item Name	Item Code	Price INR
ERT40 DIA 0.542" SQ 0.406"	K11174204193	3145
ERT40 DIA 0.562" SQ 0.421"	K11174205193	3145
ERT40 DIA 2.50 SQ 2.10	K11174141193	3145
ERT40 DIA 2.80 SQ 2.10	K11174142193	3145
ERT40 DIA 3.15 SQ 2.50	K11174118193	3145
ERT40 DIA 3.50 SQ 2.50	K11174228193	3145
ERT40 DIA 3.55 SQ 2.80	K11174119193	3145
ERT40 DIA 4.00 SQ 3.00	K11174144193	3145
ERT40 DIA 4.00 SQ 3.15	K11174120193	3145
ERT40 DIA 4.00 SQ 3.20	K11174163193	3145
ERT40 DIA 4.50 SQ 3.40	K11174145193	3145
ERT40 DIA 4.50 SQ 3.55	K11174121193	3145
ERT40 DIA 5.00 SQ 4.00	K11174122193	3145
ERT40 DIA 5.50 SQ 4.50	K11174164193	3145
ERT40 DIA 5.60 SQ 4.50	K11174123193	3145
ERT40 DIA 6.00 SQ 4.50	K11174165193	3145
ERT40 DIA 6.00 SQ 4.90	K11174146193	3145
ERT40 DIA 6.10 SQ 5.00	K11174166193	3145
ERT40 DIA 6.20 SQ 5.00	K11174167193	3145
ERT40 DIA 6.30 SQ 5.00	K11174124193	3145
ERT40 DIA 7.00 SQ 5.50	K11174147193	3145
ERT40 DIA 8.00 SQ 6.00	K11174168193	3145
ERT40 DIA 8.00 SQ 6.20	K11174148193	3145
ERT40 DIA 8.00 SQ 6.30	K11174126193	3145
ERT40 DIA 8.50 SQ 6.50	K11174170193	3145
ERT40 DIA 9.00 SQ 7.00	K11174149193	3145
ERT40 DIA 9.00 SQ 7.10	K11174127193	3145
ERT40 DIA 9.10 SQ 5.60	K11174226193	3145
ERT40 DIA 10.00 SQ 8.00	K11174128193	3145
ERT40 DIA 10.50 SQ 8.00	K11174172193	3145
ERT40 DIA 11.00 SQ 9.00	K11174150193	3145
ERT40 DIA 11.20 SQ 9.00	K11174129193	3145
ERT40 DIA 12.00 SQ 9.00	K11174151193	3145
ERT40 DIA 12.50 SQ 10.00	K11174130193	3145
ERT40 DIA 13.00 SQ 10.00	K11174173193	3145
ERT40 DIA 14.00 SQ 11.00	K11174152193	3145
ERT40 DIA 14.00 SQ 11.20	K11174131193	3145
ERT40 DIA 15.00 SQ 12.00	K11174174193	3145
ERT40 DIA 16.00 SQ 12.00	K11174153193	3145
ERT40 DIA 16.00 SQ 12.50	K11174132193	3145

Ordering Example :- ERT40 DIA 0.542" SQ 0.406" = 2 Nos.



QUICK CHANGE DRILLING & TAPPING CHUCK

TYPE : QCDTC

SIZE : 2, 3 & 4

Features :  Quick Chuck Drilling & Tapping Chuck

Type : **QCDTC**

With its appropriate Quick Change Adaptors for Drilling, Counterboring, Reaming & Tapping operators, is the ideal Quick Change System. This system is capable to perform economically and with the highest accuracy, an unlimited number of operations at a single clamping of the component.

Vertical as well as Horizontal Applications:

- Drilling
- Counterboring
- Chamfering
- Reaming
- Tapping

Suitable for:

- Drilling Machines
- Radial Drilling Machines
- Lathe Machines
- Tool Room Milling Machines
- M1TR(R8) Vertical Milling Machines.

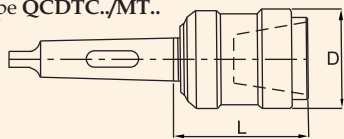


QUICK CHANGE DRILLING & TAPPING CHUCK (QCDTC)



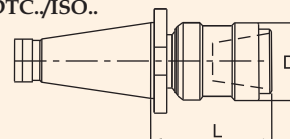
TYPE QCDTC SIZE : 2, 3 & 4

Chuck Type QCDTC./MT..



Ordering Example :Chuck QCDTC 3/MT3

Adaptor Type QCDTC./ISO..

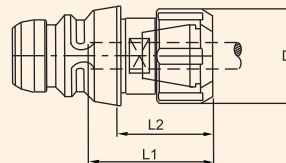


Ordering Example :Chuck QCDTC 3/ISO 50

Chuck Size	Item Code	Suitable Adaptor	D Dia.	L	Price INR
MT2BQCDTC 2	K11201230193	SIZE 2	50	75	4300
MT3BQCDTC 2	K11202230193	SIZE 2	50	75	4475
ISO40QCDTC 2	K11112230193	SIZE 2	50	96	7160
MT3BQCDTC 3	K11202231193	SIZE 3	60	88	5190
MT4BQCDTC 3	K11213231193	SIZE 3	60	89	5565
ISO40QCDTC 3	K11112231193	SIZE 3	60	109	8065
ISO50QCDTC 3	K11113231193	SIZE 3	60	99	9870
MT4BQCDTC 4	K11213232193	SIZE 4	72	102	7535
MT5BQCDTC 4	K11215232193	SIZE 4	72	102	8250
ISO40QCDTC 4	K11112232193	SIZE 4	72	122	9870
ISO50QCDTC 4	K11113232193	SIZE 4	72	112	13200

TYPE QCCCA/ER SIZE : 2, 3 & 4

Adaptor Type QCCCA./E.. (Quick Change Collet Chuck Adaptor suitable for ER Type Collets.)

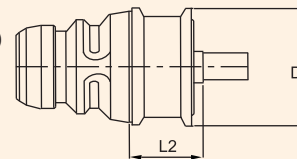


Ordering Example :Adaptor QCCCA 3/RD32

Chuck Size	Item Code	Suitable Adaptor	D Dia.	L1		L2	Price INR
				Min	Max		
QCCCA2/ER16	K11114238193	QCDTC2	42	30	50	42	3600
QCCCA3/ER16	K11115238193	QCDTC3	50	40	60	42	3740
QCCCA3/ER32	K11115239193	QCDTC3	50	40	60	51	3950
QCCCA4/ER32	K11116239193	QCDTC4	60	40	60	63	5190
QCCCA4/ER40	K11116240193	QCDTC4	60	40	60	63	5920

TYPE QCDCA/B SIZE : 2, 3 & 4

Adaptor Type QCDCA./B.. (Quick Change Drill Chuck Adaptor suitable for keyless Drill Chucks.)



(For Keyless Drill Chucks)

Ordering Example :Adaptor QCDCA 3/B16

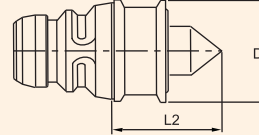
Chuck Size	Item Code	Suitable Adaptor	D Dia.	L2	Price INR
QCDCA2 B12	K11117107193	QCDTC 2	42	21.5	1440
QCDCA2 B16	K11117108193	QCDTC 2	42	26	1440
QCDCA3 B12	K11118107193	QCDTC 3	50	26	1795
QCDCA3 B16	K11118108193	QCDTC 3	50	26	1795
QCDCA4 B12	K11119107193	QCDTC 4	60	39	2870
QCDCA4 B16	K11119108193	QCDTC 4	60	39	2870



QUICK CHANGE DRILLING & TAPPING CHUCK (QCDTC)

TYPE QCCD/60° SIZE : 2, 3 & 4

Adaptor Type **QCCD../60°**.
Dead Center (Quick Change Center Dead suitable for toolroom works.)

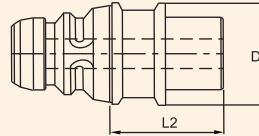


Ordering Example :Adaptor QCCD 3/60°

Chuck Size	Item Code	Suitable Chuck	D Dia.	L2	Price INR
QCCD 2 /60 DEGREE	K11220255193	QCDTC 2	42	46	1440
QCCD 3 /60 DEGREE	K11221255193	QCDTC 3	50	65	2155
QCCD 4 /60 DEGREE	K11222255193	QCDTC 4	50	78	2870

TYPE QCDA/MT SIZE : 2, 3 & 4

Adaptor Type **QCDA../MT..** (Quick Change Drill Adaptor suitable for Morse Taper Drills.)
With Internal Morse Taper DIN228

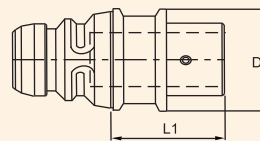


Ordering Example :Adaptor QCDA 3/MT3

Chuck Size	Item Code	Suitable Chuck	D Dia.	L2	Price INR
QCDA2 MT1	K11120237193	QCDTC 2	42	30.5	1440
QCDA2 MT2	K11120140193	QCDTC 2	42	18	1440
QCDA3 MT1	K11121237193	QCDTC 3	50	38.5	1795
QCDA3 MT2	K11121140193	QCDTC 3	50	20.5	1795
QCDA3 MT3	K11121113193	QCDTC 3	50	20.5	1795
QCDA4 MT1	K11122237193	QCDTC 4	60	56	2870
QCDA4 MT2	K11122140193	QCDTC 4	60	33.5	2870
QCDA4 MT3	K11122113193	QCDTC 4	60	33.5	2870
QCDA4 MT4	K11122114193	QCDTC 4	60	33.5	2870

TYPE QCADA/PB SIZE : 2, 3 & 4

Adaptor Type **QCADA../PB..** (Quick Change Adjustable Drill Adaptor suitable for Morse Taper Drills for pre-setting off the for adjustable Adaptors machine, Should be used with adjustable adaptors TR28X2 or TR16X2.)



Ordering Example :Adaptor QCADA 3/PB28

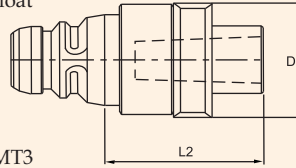
Chuck Size	Item Code	Suitable Chuck	D Dia.	L2	Adjetable Adaptor	Price INR
QCADA2 PB16	K11120109193	QCDTC 2	42	32	16	1795
QCADA3 PB28	K11121110193	QCDTC 3	50	74	28	2155
QCADA4 PB36	K11122110193	QCDTC 4	50	70	36	3225

QUICK CHANGE DRILLING & TAPPING CHUCK (QCDTC)



TYPE QCFRH/MT SIZE : 2, 3 & 4

Adaptor Type **QCFRH./MT..** (Quick Change Floating Reamer Holder suitable for Reamers, with self centering radial parallel float) with Radial Parallel Float with Internal Morse Taper DIN228

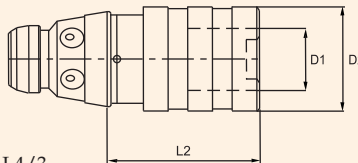


Ordering Example :Adaptor QCFRH 3/MT3

Chuck Size	Item Code	Suitable Chuck	D Dia.	Tool Location Morse Taper	Float in mm.	L2	Price INR
QCFRH3 Mt3	K11123113193	QCDTC 3	60	Mt3	1.5	91	9305
QCFRH4 Mt4	K11124114193	QCDTC 4	72	Mt4	1.5	115	11630

TYPE QCTAH/ SIZE : 2, 3 & 4

Adaptor Type **QCTAH./..** (Quick Change Tap Adaptor Housing suitable for tapping with KWES Tap Adaptors.)



Ordering Example :Adaptor QCTAH 4/3

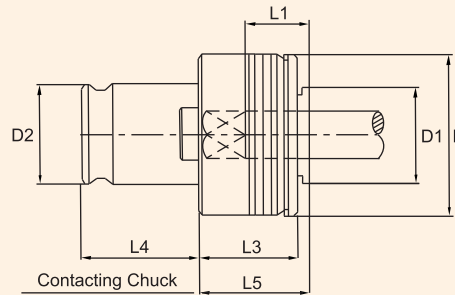
Chuck Size	Item Code	Suitable Adaptor Size	Suitable Adaptor Tread dia.	Suitable Chuck	Length Compens. Comp.	Length Compens. Exp.	D1	L2		Price INR
QCTAH2 /1	K11125112193	KWES1B	M3-M12	QCDTC 2	7.5	7.5	19	36	42	5710
QCTAH2 /2	K11125115193	KWES2B	M8-M20	QCDTC 2	12.5	12.5	31	53	72	7225
QCTAH3 /1	K11126112193	KWES1B	M3-M12	QCDTC 3	7.5	7.5	19	36	42	6510
QCTAH3 /2	K11126115193	KWES2B	M8-M20	QCDTC 3	12.5	12.5	31	53	66	7225
QCTAH3 /3	K11126116193	KWES3B	M14-M33	QCDTC 3	20	20	48	78	126	13840
QCTAH4 /1	K11127112193	KWES1B	M3-M12	QCDTC 4	7.5	7.5	19	36	42	8140
QCTAH4 /2	K11127115193	KWES2B	M8-M20	QCDTC 4	12.5	12.5	31	53	66	9770
QCTAH4 /3	K11127116193	KWES3B	M14-M33	QCDTC 4	20	20	48	78	121	13840
QCTAH4 /4	K11127117193	KWES4B	M22-M48	QCDTC 4	22.5	22.5	60	96	135	23100



QUICK CHANGE TAP ADAPTOR

TYPE KWES / B

Adaptor Type **KWES/B**



Shank Dia. & Square size of the tap to be specified.

Ordering Example : Adaptor KWES / 2B M20 Dia. 14x11.2 = 2 Nos.

Adaptor Designation	For Taps	Shank Ø	Suitable Chuck Size	D Ø	D1 max. Ø	D2 Ø	L1	L3	L4	L5
KWES/1B	M 3-M 12	3.5-11.3	QCTAH./1	32	19	19	17	25	21.5	25
KWES/2B	M 8-M 20	7.0-18.0	QCTAH./2	50	30	31	30	31	35.5	34
KWES/3B	M 14-M 33	11.0-28.0	QCTAH./3	72	48	48	44	41	55.5	45
KWES/4B	M 22-M 48	18.0-36.0	QCTAH./4	95	60	60	71	61	63.0	68

- ☆ Adaptor Type **QCCCA** : Quick Change Collet Chuck Adaptor suitable for 'ER' Type Collets.
- ☆ Adaptor Type **QCDCA** : Quick Change Drill Chuck Adaptor suitable for keyless Drill Chucks.
- ☆ Adaptor Type **QCDA** : Quick Change Drill Adaptor suitable for Morse Taper Drills.
- ☆ Adaptor Type **QCADA** : Quick Change Adjustable Drill Adaptor suitable for Morse Taper Drills for pre-setting off the machine, Should be used with adjustable adaptors TR28X2 or TR16X2.
- ☆ Adaptor Type **QCFRH** : Quick Change Floating Reamer Holder suitable for Reamers, with self centering radial parallel float.
- ☆ Adaptor Type **QCCD/60** : Quick Change Center Dead suitable for Toolroom work.
- ☆ Adaptor Type **QCTAH../..** : Quick Change Tap Adaptor Housing suitable for tapping with KWES Tap Adaptors.



'CCSFL' TAPPING ATTACHMENT (Non - Reversible)

CC : Collet Chuck
S : Safely Clutch
F : Float Radial Parallel
L : Length Compensation

APPLICATIONS:

For Tapping operations on reversible drilling
& Tapping Machines & Turning Machines.

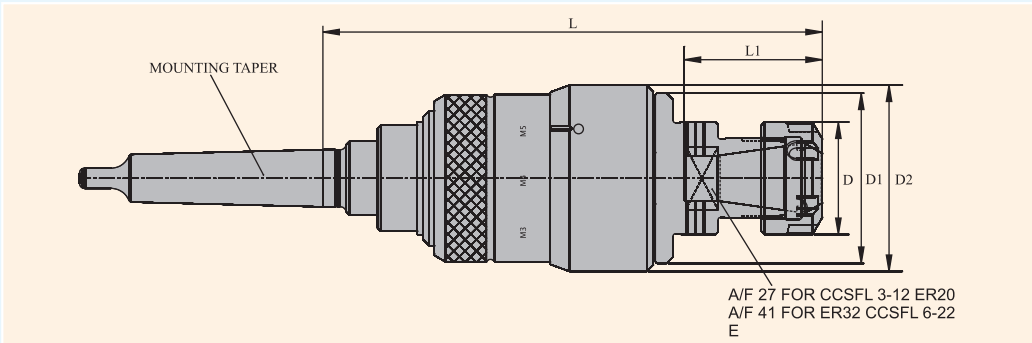
FEATURES :

- Wide range of Collet head for clamping of the taps.
- Adjustable safety torque clutch for prevention of tap breakages.
- Radial Parallel float to compensate for misalignment between hole & Tap.
- Length compensation acting on compression & expansion which compensates machine feed & Tap pitch.





CCSFL / MORSE TAPER



Item Name	Item Code	For Taps	Suitable Adaptors	Length Comp. Compr.	Length Comp. Expan.	Float	d dia.	D dia.	D1 dia.	L	approx. Weight kgs.	Price INR
MT 2B CCSFL 3-12	K11108103223	M 3 - M 12	ER20	10	20	1.0	35	58	150	43	1.5	16000
MT 2B CCSFL 1/8"-1/2"	K11108103227	1/8"-1/2"	ER20	10	20	1.0	35	58	150	43	1.5	16000
MT 3B CCSFL 3-12	K11109103223	M 3 - M 12	ER20	10	20	1.0	35	58	150	43	1.5	16000
MT 3B CCSFL 1/8"-12"	K11109103227	1/8"-1/2"	ER20	10	20	1.0	35	58	150	43	1.5	16000
MT 3B CCSFL 5/16"-7/8"	K11109103228	5/16"-7/8"	ER32	10	20	1.5	50	83	191	53	4.0	20,000
MT 3B CCSFL 8-22	K11109103224	M 8 - M 22	ER32	10	20	1.5	50	83	192	53	4.3	1,9000
MT 4B CCSFL 8-22	K11110103224	M 8 - M 22	ER32	10	20	1.5	50	83	193	53	4.5	20,000
MT 5B CCSFL 8-22	K11111103224	M 8 - M 22	ER32	10	20	1.5	50	83	191	53	4.0	20,000
MT 4B CCSFL 5/16"-7/8"	K11109103224	5/16"-7/8"	ER32	10	20	1.5	50	83	192	53	4.3	20,000
MT 5B CCSFL 5/16"-7/8"	K11111103228	5/16"-7/8"	ER32	10	20	1.5	50	83	193	53	4.5	20,000

Ordering Example :-MT 2B CCSFL 3-12 = 2 Nos.

'CCSFL' is a simple to use & operator friendly tapping Attachment.

'CCSFL' 12 is equipped with ER20 collet Head, where ER20 collets are used . The maximum capacity of the collet is 13mm. This can be used up to M16 fine pitch.

'CCSFL' 22 is equipped with ER32 collet Head, where ER32 collets are used. The maximum capacity of the collet is 20mm. This can be used up to M30 fine pitch.

SAFETY BALL CLUTCH :

There is a safety clutch mechanism which is suitable within its range of Tapping. The safety clutch disengages when the present torque is exceeded. After disengagement there is almost no Torque on the Tap & thus the clutch suffers practically no wear. Due to this Tap breakage is prevented. Blind holes can be bottom- tapped under full rotation of the spindle, reversal of the spindle re-engages the clutch and the tap is automatically

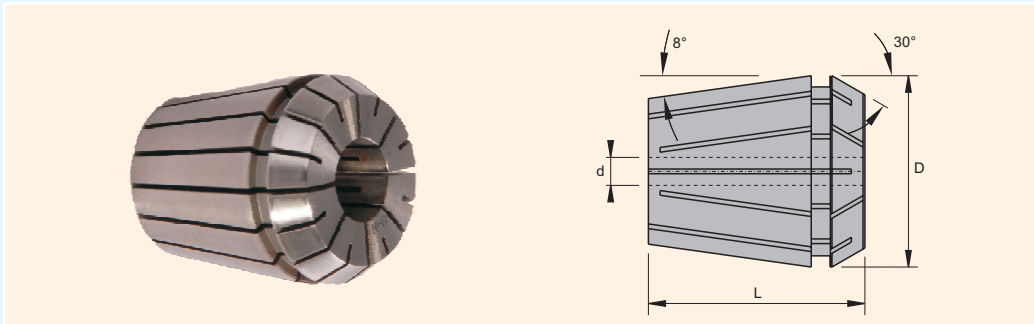
FLOAT RADIAL PARALLEL :

The ball operated floating device guarantees threads to correct tolerances. In case of misalignment, protects the tap against side thrust. It comes again into center automatically after every tapping operation . The radial Parallel float is 1.0mm & 1.50 mm respectively.

LENGTH COMPENSATION :

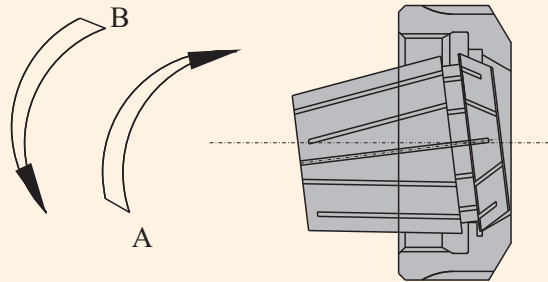
The length compensation is Ball Cage operated and hence the axial movement is very smooth. Even at the extreme Torque, the free axial movement prevents damage to thread flanks. When the feed rate & tap pitch do not match, i.e during hand feed, this helps for cutting small threads on heavy machines.

ER COLET STANDARD



Collet Designation	Bore Range 'd'			Clamping Capacity per set		Each Collet collapse by mm	D mm	L Mm	Price INR
	From mm	To	in steps mm	From mm	To mm				
ER20	1.0	13	1.0	1.0	13.0	1.0	21.0	31.0	465
ER32	2.0	20	1.0	2.0	20.0	1.0	33.0	40.0	530

The collet must always be inserted into the nut before setting the tool into the collet. The collet is fitted inside the nut by applying slight pressure A. It is removed by applying B to the collet. Never tighten the chuck without a correct size tool shank being present in the collet. Failure to observe this guideline can result in collet breakage.



CCSFL TAPPING CHUCK SET WITH COLLET & SPANNER



QUICK CHANGE TAPPING ATTACHMENT TYPE QSFL (NON REVERSIBLE)

Q : Quick Change (Tap Adaptor)
S : Safety Clutch
F : Float Radial Parallel
L : Length Compensation

Application :

For Tapping operation on Drilling , Tapping and Radial Drilling machines. For Horizontal application on Lathes.

Features :

Quick Change Tapping Attachment to be used with Quick Change Tap Adaptors KWE1 / KWE2.

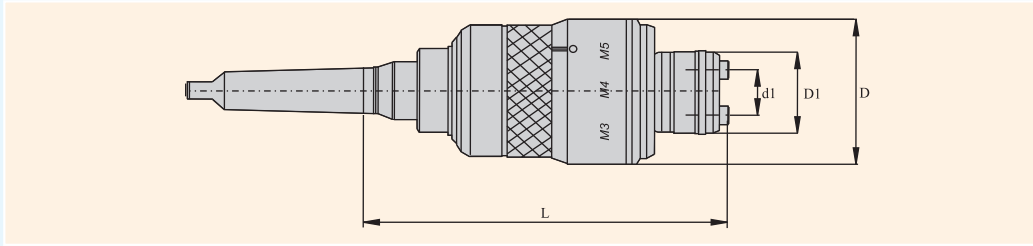
Adjustable Safety Clutch Prevents Tap Breakages.

Length compensation acting on compression and expansion to compensate between the tap pitch and machine or hand feed.

Self - centering Radial Parallel float to compensate misalignment between the tap and hole to be tapped.

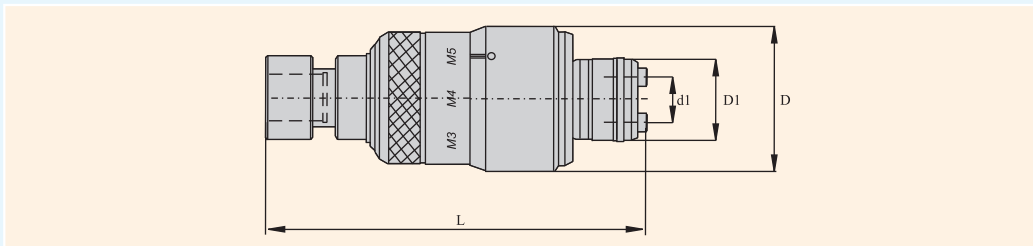


QSFL / MORSE TAPER



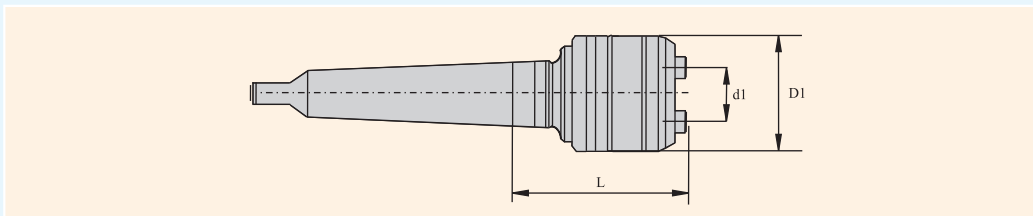
Item Name	Item Clde	For Taps	Suitable Adaptors	Length Comp.		Float	d dia.	D dia.	D1 dia.	L	approx. Weight kgs.	Price INR
				Compr.	Expan.							
MT2B QSFL 3-12	K11201104223	M 3 - M 12	KWE1	10	20	1	19	58	32	142	1.4	24,000
MT3B QSFL 3-12	K11109104223	M 3 - M 12	KWE1	10	20	1	19	58	32	142	1.4	24,000
MT3B QSFL 8-20	K11202104225	M 8 - M 22	KWE2	10	20	1.5	31	83	50	190	4.1	24,000
MT4B QSFL 8-20	K11213104225	M 8 - M 22	KWE2	10	20	1.5	31	83	50	191	4.4	28,000
MT5B QSFL 8-20	K11215104225	M 8 - M 22	KWE2	10	20	1.5	31	83	50	192	4.6	30,000

QSFL / SHORT, TAPER INTERNAL B16 & J6



Item Name	Item Code	For Taps	Suitable Adaptors	Length Comp.		Float	d1 dia.	D dia.	D1 dia.	L	approx. Weight kgs.	Price INR
				Compr.	Expan.							
B 16 QSFL 3-12	K11218104223	M3 - M12	KWE1	10	20	1	19	58	32	155	1.4	24,000
B 16QSFL1/8"-1/2"	K11218104227	1/8"-1/2"	KWE1	10	20	1	19	58	32	155	1.4	24,000
JT 6 QSFL 3-12	K11107104223	M3 - M12	KWE1	10	20	1	19	58	32	155	1.4	24,000
JT 6QSFL1/8"-1/2"	K11107104227	1/8"-1/2"	KWE1	10	20	1	19	58	32	155	1.4	24,000

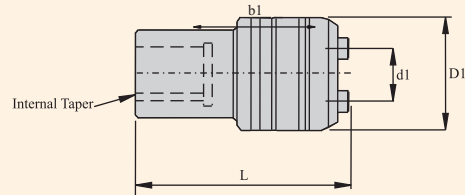
Q / MORSE TAPER



Item Name	Item Code	Capacity	Suitable Adaptors Size	D1	d1	M1	Price INR
						L	
MT2 B Q 3-12	K11201241223	M3 - M12	KWE1	32	19	40	4430
MT3 B Q 3-12	K11202241223	M3 - M12	KWE1	32	19	40	4430
Mt2 B Q 8-20	K11201241225	M8 - M20	KWE 2	50	31	61	5630
Mt3 B Q 8-20	K11202241225	M8 - M20	KWE 2	50	31	61	5630

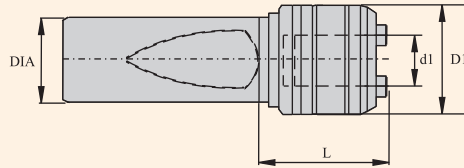


Q SHORT INTERNAL TAPER B12, B16, J, J2a, J6



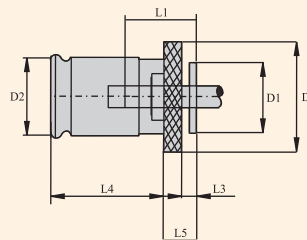
Item Name	Item Code	Capacity	Suitable Adaptors Size	D1	d1	L	Price INR
B12Q3-12	K11204241223	M3 - M12	KWE 1	32	19	59	4430
J1Q3-12	K11191241223	M3 - M12	KWE 1	32	19	59	4430
J6Q8-20	K11191241223	M8 - M20	KWE 2	50	31	84	5630

Q WELDON



Item Name	Item Code	Capacity	Suitable Adaptors Size	D1	d1	L	Price INR
DIA25Q3-12	K11209241223	M3 - M12	KWE 1	32	19	44	4430
DIA32Q3-12	K11210241223	M8 - M20	KWE 2	50	31	44	4430
DIA3/4"Q3-12	K11207241223	M3 - M12	KWE 1	32	19	44	4430
DIA1"Q3-12	K11208241223	M3 - M12	KWE 1	32	19	44	4430
DIA1"Q8-20	K11208241225	M8 - M20	KWE 2	50	31	43	5630
DIA1 1/4"Q8-20	K11216241225	M8 - M20	KWE 2	50	31	61	5630
DIA25Q8-20	K11209241225	M8 - M20	KWE 2	50	19	61	5630
DIA32Q8-20	K11210241225	M8 - M20	KWE 2	50	31	61	5630

TAP ADAPTOR (WITHOUT SAFETY CLUTCH) TYPE - KWE 1



Adaptor Designation Size	For Taps		Suitable for Chuck Size	D dia.	D1 dia.	D2 dia.	L1	L2	L3	L4	approx. Weight kgs.	Price INR
	Thread dia.	Shank dia.										
KWE 1	M3 - M12	3.5 - 11.3	QSFL 3-12	30	19	19	17	4	21.5	7	0.060	490
KWE 2	M8 - M20	7 - 18	QSFL 8-20	48	30	31	30	5	35	11	0.250	830



Quick Change Tapping Chucks Type KWFSL 60

M30(1-1/4") to M120 (4-3/4")

Application:

For tapping operations with single pass and series taps on mechanically and numerically controlled radial drilling machines, drilling and milling machines.

Features:

Quick change system with automatic locking of the adaptor in the chuck.

Adjustable length compensation acting on compression and expansion to compensate for differences between spindle feed and tap pitch.

Adjustable safety clutch with minimum torque after disengagement to protect against tap breakage.

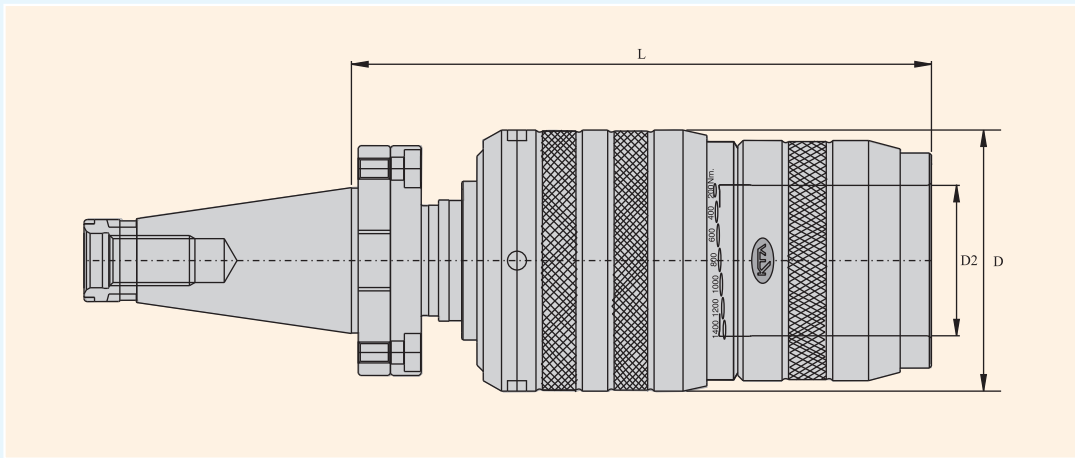
Interchangeable shanks to allow the use of the chuck on different machines spindle configurations.

For lefthand threads on request.



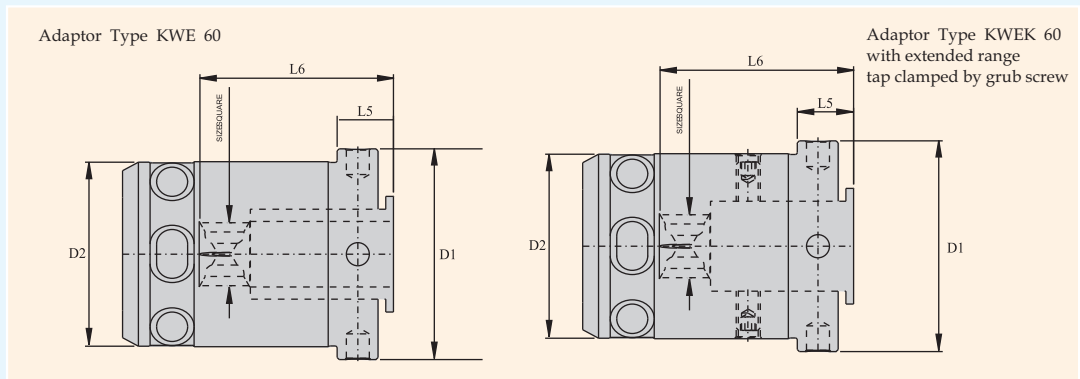


QUICK CHANGE TAPPING CHUCK (KWFSL 60)



Item Name	Item Code	For Taps	Torque	Suitable Adaptors	Length Comp.		L	D dia.	D2 dia.	Approx. weight Kgs	Price INR
					Compr.	Expan.					
ISO50 KWFSL60	K11105101193	M 30-M68 X 6 M 30-M120 X 4	1400	KWE 60	20	20	275	125	72	16	2,70,000
MT5AKWFSL60	K11214101193	M 30-M68 X 6 M 30-M120 X 4	100	KWE 60	20	20	280	125	72	16	2,70,000
MT6AKWFSL60	K11217101193	M 30-M68 X 6 M 30-M120 X 4	100	KWE 60	20	20	282	125	72	18	2,80,000

Adaptor Type KWE 60



Item Name	For Taps		D1 dia.	D2 dia.	L5 dia.	L6	approx. Weight kgs.	Price INR
	Thread dia.	Shank dia.						
KWE 60	M30 - M48	22-36	82	72	25	78	2,5	9000

Item Name	For Taps		D1 dia.	D2 dia.	L5 dia.	L6	approx. Weight kgs.	Price INR
	Thread dia.	Shank dia.						
KWE 60	M48 - M68 x 6 M48 - M120 x 4	> 36 - 56	82	72	16	88	1,5	9900

Adaptor Type KWE 60



KWE 60 DIA

Item Name	Item Code	Price INR
KWE60 DIA 22.00 SQ 18.00	K11198155193	9000
KWE60 DIA 22.40 SQ 18.00	K11198135193	9000
KWE60 DIA 23.00 SQ 17.00	K11198180193	9000
KWE60 DIA 24.00 SQ 19.00	K11198181193	9000
KWE60 DIA 25.00 SQ 19.00	K11198186193	9000
KWE60 DIA 25.00 SQ 20.00	K11198136193	9000
KWE60 DIA 26.00 SQ 21.00	K11198182193	9000
KWE60 DIA 28.00 SQ 21.00	K11198187193	9000
KWE60 DIA 28.00 SQ 22.00	K11198156193	9000
KWE60 DIA 28.00 SQ 22.40	K11198137193	9000
KWE60 DIA 30.00 SQ 23.00	K11198183193	9000
KWE60 DIA 31.50 SQ 25.00	K11198138193	9000
KWE60 DIA 32.00 SQ 24.00	K11198157193	9000
KWE60 DIA 32.00 SQ 26.00	K11198184193	9000
KWE60 DIA 35.00 SQ 26.00	K11198185193	9000
KWE60 DIA 36.00 SQ 29.00	K11198158193	9000
KWEK60 DIA 35.50 SQ 28.00	K11199139193	9000
KWEK60 DIA 38.00 SQ 29.00	K11199188193	9000
KWEK60 DIA 40.00 SQ 31.50	K11199220193	9000
KWEK60 DIA 40.00 SQ 32.00	K11199160193	9000
KWEK60 DIA 45.00 SQ 35.00	K11199161193	9000
KWEK60 DIA 45.00 SQ 35.50	K11199242193	9000
KWEK60 DIA 50.00 SQ 39.00	K11199245193	9000
KWEK60 DIA 50.00 SQ 40.00	K11199243193	9000
KWEK60 DIA 56.00 SQ 44.00	K11199246193	9000
KWEK60 DIA 56.00 SQ 45.00	K11199244193	9000

Ordering Example :-KWE60 DIA 22.00 SQ 18.00 = 2 Nos.



Quick Change Tapping Chucks (KWFSL 60)

KTA's KWFSL 60 TAPPING CHUCKS are used to tap large internal threads during the manufacture of machines, engines, turbines, nuclear reactors, components etc.

To tap these large threads, single pass as well as series taps are used. Whether single pass or series taps are used depends mainly on diameter, pitch, tolerance and surface finish of the thread and the material to be tapped.

KTA's KWFSL 60 TAPPING CHUCKS fulfills all requirements for tapping threads economically and within tolerances whether single pass or series taps are used.

With these chucks and adaptors various working methods are possible.

Tapping with single pass taps:

The thread will be finished in a single operation.

Difference between machine feed and thread pitch are compensated by the length compensation.

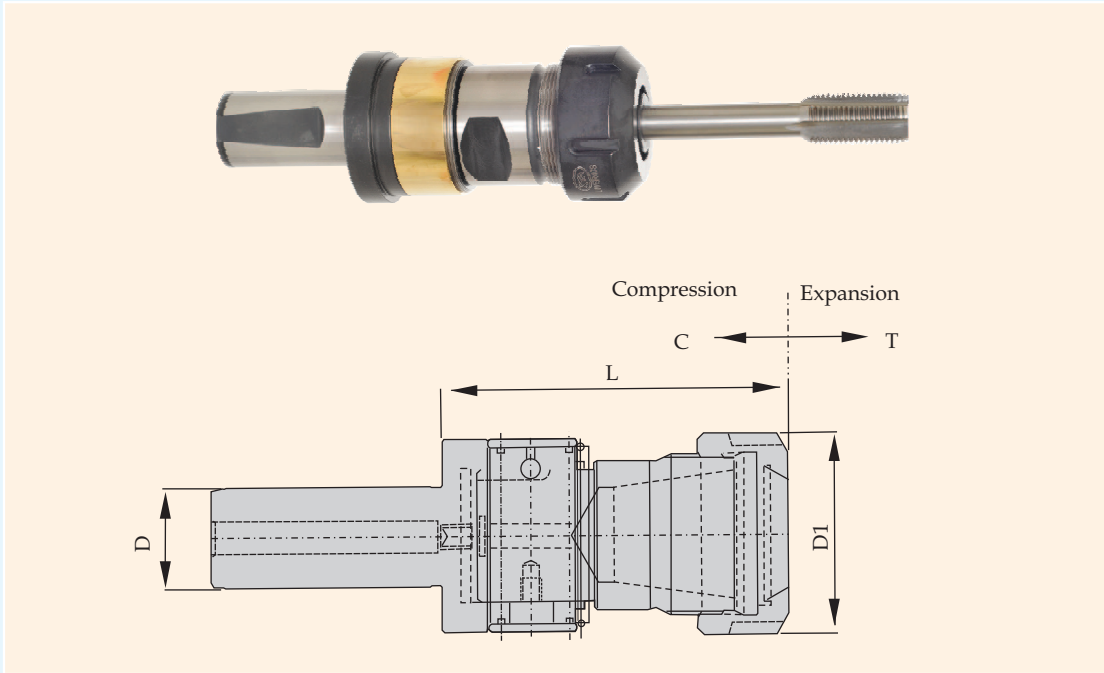
Tapping with series taps :

When tapping with series taps it is not always possible to exactly introduce the second tap into the pre-cut thread by machine. Even chucks with length compensation cannot guarantee safe results. The safest method is, to introduce the second tap by hand into the pre-cut thread and have the chuck to finish-cut the thread.

The use of chuck KWFSL 60 simplifies this method. The adaptor with the tap screwed into the pre-cut thread is automatically engaged in the chuck when the spindle moves forward and the thread is then cut. Differences between machine feed and tap pitch are compensated by the length compensation.



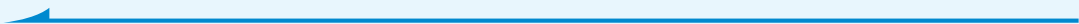
RIGID TAPPING CHUCK



Item Name	Item Code	RANGE	C	T	D1	L	D	Price INR
RTC DIA 25 ER 16	K11223256229	M4-M12	0.50	0.50	32	83	25	6600
RTC DIA 25 ER 32	K11223256230	M6-M20	0.50	0.50	50	86	25	8300
RTC DIA 25 ER 40	K11223256231	M10-M30	0.80	0.80	63	113	25	10,500



NOTE





“ KTA SILVER SERIES ”



KTA Spindle Toolings

Works : 246/9, Hinjewadi, Near Tata Johnson,
Tal. Mulshi, Dist. Pune. Pin - 411 057.
(MAHARASHTRA) INDIA.

Tel. Works : +91 20 - 64001283, 66740039, 20270680

Fax Works: +91 20 - 66740038

E-mail : info@ktaspindletoolings.com,
sales@ktaspindletoolings.com

Visit us at : www.ktaspindletoolings.com

DEALERS